

# Substance use disorder resources

## Salt Lake County

### BAART Programs

164 E 5900 S, Suite 101  
Murray, UT 84107  
801-261-5790



[baartprograms.com/baart-salt-lake-city](http://baartprograms.com/baart-salt-lake-city)

### Clinical Consultants

7601 S Redwood Rd, Bldg E  
West Jordan, UT 84084  
801-233-8670



[clinicalconsultants.org](http://clinicalconsultants.org)

### Community Wellness: Refugee & Immigrant Center Asian Association of Utah

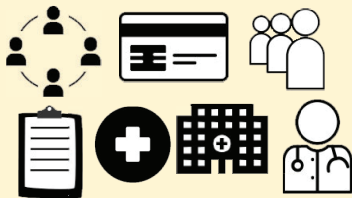
155 S 300 W, Suite 101  
Salt Lake City, UT 84101  
801-467-6060



[aau-slc.org/community-wellness](http://aau-slc.org/community-wellness)

### Courage to Change Program – Salt Lake Behavioral Health

3802 700 East  
South Salt Lake, UT 84106  
801-264-6000



[couragetochangeprogram.com](http://couragetochangeprogram.com)

### First Step House

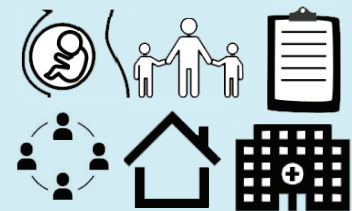
434 S 500 E (2nd floor)  
Salt Lake City, UT 84102  
801-359-8862



[firststephouse.org](http://firststephouse.org)

### House of Hope

857 E 200 S  
Salt Lake City, UT 84102  
801-487-3276



[houseofhopeut.org](http://houseofhopeut.org)

Visit [mihp.utah.gov/opioids](http://mihp.utah.gov/opioids) for a statewide list of resources.

## Key



Accepts families



Detoxification



Outpatient services



Accepts Medicaid and/or  
financial assistance



Inpatient treatment



Prioritizes pregnant  
persons



Alumni support  
network



Medication-assisted  
treatment or  
medication for  
opioid use disorder  
(MAT/MOUD)



Residential treatment



Case management



Sober living

# Substance use disorder resources

## Salt Lake County

**Odyssey House**  
344 E 100 S, Suite 301  
Salt Lake City, UT 84111  
801-322-3222

odysseyhouse.org

**Project Reality**  
150 E 700 S  
Salt Lake City, UT 84111  
801-364-8080

projectreality.net

**Recovery Clinic –  
Huntsman Mental  
Health Institute**  
501 Chipeta Way  
Salt Lake City, UT 84108  
801-583-2500

healthcare.utah.edu/hmhi/treatments/addiction-recovery/recovery-clinic.php

**Steps Recovery Centers**  
Draper and Murray locations  
801-800-8142

stepsrc.com

**Substance Use in Pregnancy  
Recovery Addiction Dependence  
Clinic (SUPeRAD)**

50 N Medical Dr  
Salt Lake City, UT  
84108  
801-581-8425

5126 W Daybreak  
Parkway  
South Jordan, UT  
84009  
801-581-8425

medicine.utah.edu/internal-medicine/epidemiology/parcka/patient-care

**Volunteers of America**  
Cornerstone counseling and  
center for women & children  
Locations in Salt Lake City and  
Murray, UT  
801-363-9414

voaut.org

**Valley Behavioral Health**  
Locations across Salt Lake  
Valley  
801-263-7100

valleycares.com

Visit [mihp.utah.gov/opioids](http://mihp.utah.gov/opioids) for a statewide list of resources.

### Key

Accepts families	Detoxification	Outpatient services
Accepts Medicaid and/or financial assistance	Inpatient treatment	Prioritizes pregnant persons
Alumni support network	Medication-assisted treatment or medication for opioid use disorder (MAT/MOUD)	Residential treatment
Case management		Sober living

# Substance use disorder resources

## Salt Lake County



Name	Contact	Services
A/D Psychotherapy & Clinical Consulting, Inc.	801-233-8577 adpsychotherapy.com 9662 S 700 E Sandy, UT 84070	<ul style="list-style-type: none"> <li>• Substance-use disorder (SUD) assessment and evaluation</li> <li>• Intensive and general outpatient</li> <li>• Dual diagnosis</li> <li>• Long-term aftercare—workshops, education</li> </ul>
Ascendant Behavioral Health	801-872-5516 ascendantclinics.com □ 5383 S 900 E, Suite 103 Murray, UT 84117	<ul style="list-style-type: none"> <li>• General outpatient services</li> <li>• Mental health counseling and addiction counseling Includes cognitive behavioral therapy (CBT) medication-assisted treatment (MAT) approved by a psychiatrist</li> <li>• Accepts most major insurance and bishop pay</li> </ul>
Anicka Counseling Center	385-333-6403 anickacounselingcenter.org 3195 S Main St, Suite 260 Salt Lake City, UT 84115	<ul style="list-style-type: none"> <li>• Medication for opioid use disorder (OUD), like buprenorphine</li> <li>• PRIME for Life</li> <li>• Outpatient/office treatment</li> <li>• Relapse prevention</li> <li>• Trauma counseling</li> <li>• Accepts Medicaid, private pay, and insurance</li> </ul>
Asian Association of Utah: Refugee and Immigrant Center Community Wellness Program	801-467-6060 aau-slc.org/community-wellness 155 S 300 W, Suite 101 Salt Lake City, UT 84101	<ul style="list-style-type: none"> <li>• Priority populations: Asian American and Pacific Islander, persons of color, immigrants, and refugees</li> <li>• Dual diagnosis</li> <li>• Outpatient mental health/SUD treatment</li> <li>• Psychiatric medication management</li> <li>• Medicaid and insurance navigators available</li> </ul>
Assessment Counseling and Educational Services	801-265-8000 acestreatment.org/index.html 547 W 3900 S, Suite F Millcreek, UT 84123	<ul style="list-style-type: none"> <li>• Dual diagnosis</li> <li>• Outpatient treatment only</li> <li>• Motivational enhancement therapy model</li> <li>• Random urinalysis</li> <li>• Aftercare—discounted rates available</li> <li>• Sliding scale fees based on income</li> </ul>

# Substance use disorder resources

## Salt Lake County



Name	Contact	Services
Assessment & Referral Services (ARS)	<p>801-587-2770</p> <p><a href="http://medicine.utah.edu/psychiatry/assessment-referral-services">medicine.utah.edu/psychiatry/assessment-referral-services</a></p> <p>450 S 900 E, Suite 300 Salt Lake City, UT 84120</p>	<ul style="list-style-type: none"> <li>• SUD assessment and evaluation</li> <li>• Interim group sessions for those waiting for treatment referrals to SLC behavioral health services</li> <li>• Accepts Medicaid, sliding scale fee service option</li> </ul>
BAART Programs, SLC	<p>801-261-5790</p> <p><a href="http://baartprograms.com/baart-salt-lake-city">baartprograms.com/baart-salt-lake-city</a></p> <p>164 E 5900 S, Suite 101 Murray, UT 84107</p>	<ul style="list-style-type: none"> <li>• Medication for opioid use disorder, including methadone and buprenorphine/naloxone</li> <li>• Outpatient counseling</li> <li>• Accepts Medicaid and Medicare Part B</li> </ul>
Changes Counseling	<p>801-542-7060</p> <p><a href="http://changescounseling.org/addiction-therapy">changescounseling.org/addiction-therapy</a></p> <p>8221 S 700 E Sandy, UT 84070</p>	<ul style="list-style-type: none"> <li>• Intensive and general outpatient services</li> <li>• Therapies focus on identifying triggers, problem solving and coping, relapse prevention, skill and relationship building, alcohol and drug education</li> <li>• Addiction and recovery counseling</li> <li>• Accepts private insurance, Medicaid, and self-pay</li> </ul>
CLD3 Counseling	<p>801-521-4227</p> <p><a href="http://cld3counseling.com">cld3counseling.com</a></p> <p>352 S Denver St, Suite 350 Salt Lake City, UT 84111</p>	<ul style="list-style-type: none"> <li>• Holistic substance use disorder and opioid use disorder treatment</li> <li>• Dual diagnosis</li> <li>• PRIME for Life</li> <li>• General and intensive outpatient services</li> <li>• Individual, family, and group therapy</li> </ul>
Clinical Consultants	<p>(801) 233-8670</p> <p><a href="http://clinicalconsultants.org">clinicalconsultants.org</a></p> <p>7601 S. Redwood Road, Bldg E West Jordan, Utah 84084</p>	<ul style="list-style-type: none"> <li>• Medication for opioid use disorder</li> <li>• Dual diagnosis</li> <li>• Assessment and evaluation</li> <li>• Intensive and general outpatient treatment</li> <li>• Connection to social services</li> <li>• Case management</li> </ul>

# Substance use disorder resources

## Salt Lake County



Name	Contact	Services
Comprehensive Treatment Centers - Salt Lake City	<p>Intake: 801-899-0191 Salt Lake: 801-596-2111</p> <p><a href="http://ctcprograms.com/location/salt-lake-city-comprehensive-treatment-center">ctcprograms.com/location/salt-lake-city-comprehensive-treatment-center</a></p> <p>448 E 2100 S Salt Lake City, UT 84115</p>	<ul style="list-style-type: none"> <li>• Medication assisted treatment</li> <li>• Counseling</li> <li>• Outpatient detox</li> <li>• Accepts Medicaid</li> </ul>
Comprehensive Treatment Centers - Taylorsville	<p>Intake: 801-899-0191 Taylorsville: 801-293-9999</p> <p><a href="http://ctcprograms.com/location/taylorsville-comprehensive-treatment-center">ctcprograms.com/location/taylorsville-comprehensive-treatment-center</a></p> <p>5983 S Redwood Rd Taylorsville, UT 84123</p>	<ul style="list-style-type: none"> <li>• Medication assisted treatment</li> <li>• Counseling</li> <li>• Outpatient detox</li> <li>• Accepts Medicaid</li> </ul>
Collective Recovery Center	<p>385-557-2183</p> <p><a href="http://collectiverecoverycenter.com/services/drug-recovery-treatment">collectiverecoverycenter.com/services/drug-recovery-treatment</a></p> <p>9543 S 700 E, Suite 200 Sandy, UT 84070</p>	<ul style="list-style-type: none"> <li>• Intensive and general outpatient services</li> <li>• Dual diagnosis</li> <li>• Virtual appointments</li> <li>• Holistic approach</li> <li>• Accepts Blue Cross Blue Shield, FirstHealth, Medicaid, and WISE provider network</li> </ul>
Courage to Change Program - Salt Lake Behavioral Health Clinic	<p>801-264-6000</p> <p><a href="http://couragetochangeprogram.com">couragetochangeprogram.com</a></p> <p>3802 S 700 E South Salt Lake, UT 84106</p>	<ul style="list-style-type: none"> <li>• Medication-assisted treatment</li> <li>• Intensive outpatient and inpatient care</li> <li>• Detox programs and case management</li> <li>• Cognitive behavioral therapy</li> <li>• Accepts most insurance</li> <li>• Provides financial assistance for those who need it</li> </ul>
De Novo Services	<p>801-263-1056</p> <p><a href="http://denovoservices.org">denovoservices.org</a></p> <p>339 East 3900 South, #155 Salt Lake City, UT 84107</p>	<ul style="list-style-type: none"> <li>• Alcohol use treatment</li> <li>• Substance use counseling for individuals</li> <li>• Group therapy</li> <li>• Counseling for friends and families of individuals with substance use disorders</li> </ul>

# Substance use disorder resources

## Salt Lake County



Name	Contact	Services
Highland Ridge Hospital	<p>855-402-1096</p> <p><a href="http://highlandridgehospital.com/programs/substance-abuse">highlandridgehospital.com/programs/substance-abuse</a></p> <p>7309 S 180 W Midvale, UT 84047</p>	<ul style="list-style-type: none"> <li>• Inpatient treatment</li> <li>• Intensive and general outpatient services</li> <li>• Provides detoxification</li> <li>• Dual diagnosis</li> <li>• 12-step</li> <li>• Substance specific treatment options</li> </ul>
Highland Springs Specialty Clinic	<p>Local: 801-536-6545 Text: 385-474-8889</p> <p><a href="http://highlandspringsclinic.org/substance-abuse-treatment">highlandspringsclinic.org/substance-abuse-treatment</a></p> <p>12427 S Pasture Rd, Suite 104 Riverton, UT 84065</p>	<ul style="list-style-type: none"> <li>• General outpatient treatment</li> <li>• Dual diagnosis</li> <li>• Telehealth options</li> <li>• Psychiatric medication management</li> </ul>
House of Hope	<p>801-487-3276</p> <p><a href="http://houseofhopeut.org">houseofhopeut.org</a></p> <p>857 E 200 S Salt Lake City, UT 84102</p>	<ul style="list-style-type: none"> <li>• Focuses on pregnant women and their families</li> <li>• Inpatient treatment</li> <li>• Residential treatment</li> <li>• Outpatient treatment</li> <li>• Allows mother to bring in 2 children with them at time of residential treatment</li> <li>• Outreach and aftercare for alumni</li> </ul>
Huntsman Mental Health Institute	<p>801-583-2500</p> <p><a href="http://healthcare.utah.edu/hmhi/treatments/addiction-recovery">healthcare.utah.edu/hmhi/treatments/addiction-recovery</a></p> <p>501 Chipeta Way Salt Lake City, UT 84108</p>	<ul style="list-style-type: none"> <li>• Detoxification center</li> <li>• Inpatient services</li> <li>• Intensive and general outpatient services</li> <li>• Dual diagnosis</li> <li>• Psychiatric medication management</li> <li>• SMART recovery model</li> <li>• Medication for opioid use disorder</li> </ul>

# Substance use disorder resources

## Salt Lake County



### Name

### Contact

### Services

Intermountain  
Healthcare  
"Dayspring"

801-314-2600  
[intermountainhealthcare.org/services/behavioral-health/dayspring](http://intermountainhealthcare.org/services/behavioral-health/dayspring)  
5770 S 25 E, Suite 300  
Murray, UT 84107

- Intensive and general outpatient services
- Medication-assisted treatment
- Dual diagnosis
- Group and individual treatment
- Drug testing
- Outreach and aftercare for alumni

Jordan West Family  
Counseling

801-556-0749  
[jwfc.info](http://jwfc.info)  
9263 Redwood Rd, Bldg 8  
West Jordan, UT 84088

- General outpatient services
- Community mental health agency
- Dual diagnosis

Latino Behavioral  
Health Services

801-935-4447  
[latinobehavioral.org](http://latinobehavioral.org)  
3471 S W Temple  
Salt Lake City, UT 84115

- Priority population: Hispanic and Latino
- Community education, advocacy, and prevention
- Peer counseling and mentorship
- Support groups
- Individual and family therapy regarding addiction

# Substance use disorder resources

## Salt Lake County



### Name

### Contact

### Services

Multicultural  
Counseling Center

801-915-0359  
[mccounseling.com/substance-abuse-services](http://mccounseling.com/substance-abuse-services)  
7625 S 3200 W, Suite 2 & 4  
West Jordan, UT 84084

- Priority population: Black, Indigenous, and people of color (BIPOC)
- Outpatient services
- Dual diagnosis
- Case management

Next Level Recovery

888-759-5846  
[nextlevelrecovery.com/opiate-addiction-treatment-in-utah-2](http://nextlevelrecovery.com/opiate-addiction-treatment-in-utah-2)  
6771 S 900 E  
Midvale, UT 84047

- Opioid use disorder specific treatment program
- General outpatient services
- Sister company provider of Sober Living Housing
- Dual diagnosis
- Connection to sober living facilities
- Accepts private insurance, self-pay financing options

Odyssey House

801-322-3222  
[odysseyhouse.org](http://odysseyhouse.org)  
344 E 100 S  
Salt Lake City, UT 84111

- Residential treatment program
- Case management
- Allows families and provides family therapy
- Intensive and general outpatient therapy
- 48 funding contractors, also coverage by insurance and Medicaid

Pathways  
Real Life Recovery

801-509-9003  
[pathwaysreallife.com/programs](http://pathwaysreallife.com/programs)  
230 W Towne Ridge Pkwy,  
Suite 105  
Sandy, UT 84070

- Intensive and general outpatient services
- Women's and men's residential recovery services
- Assessment and evaluation
- Evidence-based treatment strategies
- Inpatient services



# Substance use disorder resources

## Salt Lake County



### Name

### Contact

### Services

Project Reality

801-364-8080  
projectreality.net  
150 E 700 S  
Salt Lake City, UT 84111

- Medication for opioid use disorder
- Dual diagnosis
- Outpatient treatment
- Primary medical care
- Harm reduction and prevention
- Multiple clinic locations and hours

Red Mesa Behavioral Health Urban Indian Center of Salt Lake

801-486-4877  
uicsl.org/departments/red-mesa  
120 W 1300 S  
Salt Lake City, UT 84115

- Assessment and evaluation
- Intensive and general outpatient services
- Dual diagnosis
- Holistic treatment

Red Willow Counseling Services

385-313-0055  
redwillowcounseling.com  
1425 S 700 E, Suite 102  
Salt Lake City, UT 84105

- Assessment and evaluation
- Intensive and general outpatient services
- Family intervention models
- Continuing care and long-term support
- Telehealth options

Redwood Recovery Foundation for Family Life/Mentor Works

801-679-3921  
rr.fflut.org  
11978 S Redwood  
Riverton, UT 84065

- Assessment and evaluation
- Intensive and general outpatient services
- Drug test 2-3 times a week
- Case management and substance abuse assessments
- Peer support and coaching

Renew Wellness and Recovery

801-890-1000  
renewwellnessrecovery.com  
9500 S 500 W, #213  
Sandy, UT 84070

- 7 bed residential treatment service for women
- Trauma and physical wellness focus
- Peer coaching
- Discharge planning
- Accepts most private insurance (not Medicaid)

# Substance use disorder resources

## Salt Lake County



Name	Contact	Services
Salson Clinics	801-666-8640 <a href="http://salsonclinics.com/addiction-recovery">salsonclinics.com/addiction-recovery</a> 1745 W 7800 S West Jordan, UT 84088	<ul style="list-style-type: none"><li>• Medication for opioid use disorder</li><li>• Medication assistance therapy counseling—outpatient basis</li><li>• Accepts most insurance</li></ul>
SLC Behavioral Health Services	385-468-4707 <a href="http://slco.org/behavioral-health">slco.org/behavioral-health</a> 2001 S State St, S2-300 Salt Lake City, UT 84190	<ul style="list-style-type: none"><li>• Assessment, evaluations, referral out to appropriate levels of care</li><li>• Accepts Medicaid, sliding scale fees</li><li>• Priority population: pregnant and parenting persons, IV drug users</li></ul>
Smart Medical	801-209-7232 <a href="http://opiates.net/center/smart-medical-salt-lake-city-ut">opiates.net/center/smart-medical-salt-lake-city-ut</a> 6337 S Highland Dr. Salt Lake City, UT 84121	<ul style="list-style-type: none"><li>• Heroin and opioid detoxification center (not for pregnant persons)</li><li>• Intensive and general outpatient services</li><li>• General outpatient opioid use disorder services</li><li>• Medication for opioid use disorder options</li></ul>
South Point Counseling Services	801-302-3801 <a href="http://southpointcs.com/substance-abuse">southpointcs.com/substance-abuse</a> 1206 W South Jordan Parkway, Suite D South Jordan, UT 84095	<ul style="list-style-type: none"><li>• Intensive and general outpatient services</li><li>• Dual diagnosis</li><li>• Includes court-ordered treatment intensive and general outpatient services</li><li>• Residential services</li></ul>

# Substance use disorder resources

## Salt Lake County



Name	Contact	Services
Steps Recovery Centers	801-800-8142 <a href="http://stepsrc.com/facilities/draper">stepsrc.com/facilities/draper</a> 345 E 4500 S, #100 Murray, UT 84107	<ul style="list-style-type: none"> <li>• Intensive and general outpatient services</li> <li>• Residential services</li> <li>• Dual diagnosis</li> <li>• Family support</li> <li>• Aftercare with alumni support network</li> <li>• Accepts Medicaid, most private insurance</li> </ul>
Tranquility Place	801-924-9240 <a href="http://tranquility-place.com/home">tranquility-place.com/home</a> 160 E 800 S, Suite B Salt Lake City, UT 84111	<ul style="list-style-type: none"> <li>• Individual counseling</li> <li>• Group counseling</li> <li>• Medication assisted treatment and opioid replacement therapy</li> <li>• Medical dosing evaluation</li> <li>• Bloodwork analysis</li> </ul>
Turning Point Centers	888-979-7704 <a href="http://turningpointcenters.com">turningpointcenters.com</a> Locations across Utah	<ul style="list-style-type: none"> <li>• Assessment and evaluation</li> <li>• Intensive and general outpatient services</li> <li>• Dual diagnosis</li> <li>• Medication for opioid use disorder, as needed</li> <li>• Accepts private insurance - insurance verification of coverage is available online</li> </ul>
Utah Harm Reduction Coalition	Office: 801-569-1995 Treatment: 385-275-6162 <a href="http://utahharmreduction.org">utahharmreduction.org</a> 91 E Fort Union Boulevard Midvale, UT 84047	<ul style="list-style-type: none"> <li>• General outpatient services</li> <li>• Virtual appointments</li> <li>• Needle exchange and removal program</li> <li>• Accepts Medicaid, TAM, Blue Cross Blue Shield, Select Health, and UofU Health insurance</li> </ul>
Utah Partners for Health: Behavioral Health Clinic	801-417-0131 <a href="http://upfh.org">upfh.org</a> 8446 S. Harrison St. Midvale, UT 84047	<ul style="list-style-type: none"> <li>• General outpatient services</li> <li>• Dual diagnosis</li> <li>• Offers services in English and Spanish</li> <li>• Included topics: grief, trauma, domestic violence, parent-child relationships, mood, stress</li> <li>• No charge for services</li> </ul>

# Substance use disorder resources

## Salt Lake County



### Name

### Contact

### Services

Valley Behavioral Health

Toll Free: 888-949-4864  
Utah: 801-263-7100

[valleycares.com](http://valleycares.com)

3809 W 6200 S  
Kearns, UT 84118

- Assessment and evaluation
- Residential services for women and children (Valley Phoenix)
- Intensive and general outpatient services
- Dual diagnosis
- Medication for opioid use disorder

Volunteers of America, Utah

801-363-9414

[voaut.org/mission-facilities](http://voaut.org/mission-facilities)

432 W Bearcat Dr.  
Salt Lake City, UT 84115

- Detoxification center—14 day stay for moms and their children
- General outpatient services
- Dual diagnosis

## Additional resources for pregnant persons

#### **Pregnancy & opioid resources:**

[mihp.utah.gov/opioids](http://mihp.utah.gov/opioids)

#### **Pregnancy & opioid resources (en Español):**

[mihp.utah.gov/opioides](http://mihp.utah.gov/opioides)

#### **Maternal mental health referral network:**

[maternalmentalhealth.utah.gov/](http://maternalmentalhealth.utah.gov/)

#### **Naloxone:**

[naloxone.utah.gov/](http://naloxone.utah.gov/)

#### **Never use alone:**

800-484-3731

[neverusealone.com/](http://neverusealone.com/)

#### **Utah support advocates for recovery awareness:**

[myusara.com/](http://myusara.com/)

#### **211 Utah:**

[211utah.org/](http://211utah.org/)