

# Substance use disorder resources

## Bear River Health Department



**Bear River Health Department: Substance Abuse Counseling**  
 Logan, Brigham, Tremonton, Randolph, Garden City locations  
 435-792-6500

[brhd.org/services/counseling-services](http://brhd.org/services/counseling-services)

**Bear River Mental Health**  
 Box Elder, Cache, and Rich County Locations  
 435-734-9449

[brmh.com](http://brmh.com)

**Heart t' Heart**  
 450 E 100 S, Room 10  
 Hyrum, UT 84319  
 435-512-2108

[heart-t-heart.org](http://heart-t-heart.org)

**LDS Family Services**  
 175 W 1400 N, Suite A  
 Logan, UT 84341  
 435-752-5302

[providentliving.churchofjesuschrist.org/lds-family-services?lang=eng](http://providentliving.churchofjesuschrist.org/lds-family-services?lang=eng)

**Narcotics Anonymous**  
 Northern Utah Area, various location and times  
 877-479-6262

[northernutahna.org](http://northernutahna.org)

**USU Marriage and Family Therapy Clinic**  
 750 N 950 E  
 Logan, UT 84322  
 435-797-7430

[scc.e.usu.edu/services/marriage-family-therapy](http://scc.e.usu.edu/services/marriage-family-therapy)

Visit [mihp.utah.gov/opioids](http://mihp.utah.gov/opioids) for a statewide list of resources.

### Key

Accepts families	Detoxification	Outpatient services
Accepts Medicaid and/or financial assistance	Inpatient treatment	Prioritizes pregnant persons
Alumni support network	Medication-assisted treatment or medication for opioid use disorder (MAT/MOUD)	Residential treatment
Case management		Sober living

v2 27Dec2022

# Substance use disorder resources

## Bear River Health Department



### Name

### Contact

### Services

Bear River Health Department:  
Substance Abuse Counseling

801-587-2770  
[brhd.org/services/counseling-services](http://brhd.org/services/counseling-services)  
Logan, Brigham, Tremonton, Randolph, Garden City locations

- Substance use disorder (SUD) assessment and evaluation
- Outpatient treatment with individual, group, or family counseling
- Intensive outpatient program 3-4 days per week
- Accepts Medicaid, sliding scale fee

Bear River Mental Health

435-734-9449  
[brmh.com](http://brmh.com)  
Box Elder, Cache, and Rich County locations

- Psychological testing, assessments, behavior management, crisis services, psychotherapy, medication management, and other services
- Accepts Medicaid, sliding fee schedule may apply

Family Institute of Northern Utah

435-752-1976  
[finu.org](http://finu.org)  
190 East Center Street  
Logan, UT 84321

- Focuses on individuals, couples, and families
- Substance abuse evaluations
- Certified substance abuse treatment program
- Accepts Blue Cross Blue Shield, United Behavioral Health, and MHNNet/Altius

Heart t' Heart

435-512-2108  
[heart-t-heart.org](http://heart-t-heart.org)  
450 E 100 S, Room 10  
Hyrum, UT 84319

- In-person and online meetings
- 12 step recovery program
- Focuses on compulsive and addictive behaviors like substance use disorders
- Based on principles from the Church of Latter-day Saints

LDS Family Services

435-752-5302  
[providentliving.churchofjesuschrist.org/lds-family-services](http://providentliving.churchofjesuschrist.org/lds-family-services)  
175 W 1400 N, Suite A  
Logan, UT 84341

- Addiction recovery meetings with individual, couple and family options
- In-person and online meeting options
- Must be referred by leader of the Church of Latter-day Saints in order to attend

# Substance use disorder resources

## Bear River Health Department



### Name

### Contact

### Services

Narcotics  
Anonymous

877-479-6262  
northernutahna.org  
Northern Utah Area, various  
location and times

- Outpatient services; meetings offered locally every day of the week (Sunday - Saturday)
- Support groups for families and individuals
- Alumni support network

USU Marriage and  
Family Therapy Clinic

435-797-7430  
scce.usu.edu/services/marriage-  
family-therapy  
750 N 950 E  
Logan, UT 84322

- Outpatient therapy for individuals, couples, and families dealing with substance abuse
- Fees are determined on a sliding fee scale based on income and family size
- No one will be denied services due to inability to pay

## Additional resources for pregnant persons

### **Pregnancy & opioid resources:**

[mihp.utah.gov/opioids](http://mihp.utah.gov/opioids)

### **Pregnancy & opioid resources (en Español):**

[mihp.utah.gov/opioides](http://mihp.utah.gov/opioides)

### **Maternal mental health referral network:**

[maternalmentalhealth.utah.gov/](http://maternalmentalhealth.utah.gov/)

### **Naloxone:**

[naloxone.utah.gov/](http://naloxone.utah.gov/)

### **Never use alone:**

800-484-3731  
[neverusealone.com/](http://neverusealone.com/)

### **Utah support advocates for recovery awareness:**

[myusara.com/](http://myusara.com/)

### **211 Utah:**

[211utah.org/](http://211utah.org/)

# Substance use disorder resources

## Central Utah Public Health Department



**Central Utah Counseling Center**  
Locations across Central Utah  
435-283-8400

[cucc.us/locations](http://cucc.us/locations)

**Cornerstone Clinical Services LLC**  
520 E Topaz Blvd.  
Ste 208  
Delta, UT 84624  
435-864-7072

[cornerstoneclinicalservice.com](http://cornerstoneclinicalservice.com)

**LDS Family Services and Counseling**  
190 W 100 S  
Richfield, UT 84701  
435-896-6446

[providentliving.churchofjesuschrist.org/lds-family-services?lang=eng](http://providentliving.churchofjesuschrist.org/lds-family-services?lang=eng)

**Four Points Health**  
Kanosh: 157 N Reservation Dr.,  
Kanosh, UT 84637  
435-253-5890  
Richfield: 440 S. Main St,  
Richfield, UT 84701  
435-893-6800

[fourpointshealth.org](http://fourpointshealth.org)

**Pathways Wholeness Center**  
189 E Center St  
Glennwood, UT 84730  
435-246-5239

[pathwaysreallife.com/inpatient-drug-and-alcohol-rehab](http://pathwaysreallife.com/inpatient-drug-and-alcohol-rehab)

Visit [mihp.utah.gov/opioids](http://mihp.utah.gov/opioids) for a statewide list of resources.

### Key

Accepts families	Detoxification	Outpatient services
Accepts Medicaid and/or financial assistance	Inpatient treatment	Prioritizes pregnant persons
Alumni support network	Medication-assisted treatment or medication for opioid use disorder (MAT/MOUD)	Residential treatment
Case management		Sober living

v3 27Dec2022

# Substance use disorder resources

## Central Utah Public Health Department



Name	Contact	Services
Central Utah Counseling Center	435-283-8400 cucc.us/locations Locations across Central Utah	<ul style="list-style-type: none"><li>• General outpatient services</li><li>• Case management</li><li>• Relapse prevention</li><li>• Addiction education</li><li>• Accepts Medicaid, private insurance</li></ul>
Cornerstone Clinical Services, LLC	435-864-7072 cornerstoneclinicalservice.com 520 E Topaz Blvd., Suite 208 Delta, UT 84624	<ul style="list-style-type: none"><li>• General outpatient services (office-based)</li><li>• Dual diagnosis</li><li>• PRIME for Life</li></ul>
Four Points Health	Kanosh: 435-253-5890 Richfield: 435-893-6800 fourpointshealth.org Kanosh: 157 N Reservation Dr. Kanosh, UT 84637 Richfield: 440 S. Main St Richfield, UT 84701	<ul style="list-style-type: none"><li>• Serves tribal members and those living in Southwest Utah</li><li>• Intensive and general outpatient services</li><li>• Dual diagnosis</li><li>• Residential options for tribal members</li><li>• Accepts most private insurance, Medicaid, and private fee application available</li></ul>
Intermountain Healthcare Behavioral Network Program/ Intermountain Healthcare Treatment Referral Program	Millard County: 435-864-1512 Sevier & Sanpete County: Behavioral Health Patient Liaison Linda Philips 435-851-8206	<ul style="list-style-type: none"><li>• Referral program for mental health counseling</li><li>• Reduced fees for those who are underinsured or uninsured</li><li>• Refer to local therapists for treatment</li><li>• Medication management is covered through the program</li></ul>
LDS Family Services and Counseling	435-896-6446 providentliving.churchofjesuschrist.org/lds-family-services?lang=eng 190 W 100 S Richfield, UT 84701	<ul style="list-style-type: none"><li>• General outpatient services (office-based)</li><li>• Support groups</li><li>• Faith-based treatment—referred by bishop</li></ul>

# Substance use disorder resources

## Central Utah Public Health Department



### Name

### Contact

### Services

Pathways Wholeness  
Center

435-246-5239

[pathwaysreallife.com/inpatient-drug-and-alcohol-rehab](http://pathwaysreallife.com/inpatient-drug-and-alcohol-rehab)

189 E Center St  
Glennwood, UT 84730

- Inpatient treatment services
- Dual diagnosis
- Inpatient treatment and detox
- Residential detox treatment

Sunray Family  
Counseling

435-283-4690

[sunrayfamilycounseling.com](http://sunrayfamilycounseling.com)

Ephraim:                      Richfield:  
271 S. Main                      375 N Main St.  
Ephraim, UT                      Richfield, UT  
84627                              84701

- Inpatient treatment services
- Dual diagnosis
- Inpatient treatment and detox
- Residential detox treatment

## Additional resources for pregnant persons

### Pregnancy & opioid resources:

[mihp.utah.gov/opioids](http://mihp.utah.gov/opioids)

### Pregnancy & opioid resources (en Español):

[mihp.utah.gov/opioides](http://mihp.utah.gov/opioides)

### Maternal mental health referral network:

[maternalmentalhealth.utah.gov/](http://maternalmentalhealth.utah.gov/)

### Naloxone:

[naloxone.utah.gov/](http://naloxone.utah.gov/)

### Never use alone:

800-484-3731

[neverusealone.com/](http://neverusealone.com/)

### Utah support advocates for recovery awareness:

[myusara.com/](http://myusara.com/)

### 211 Utah:

[211utah.org/](http://211utah.org/)

# Substance use disorder resources

## Davis County



### UWNQC

Utah Women & Newborns Quality Collaborative

#### Davis Behavioral Health

934 S Main Street  
Layton, UT 84041  
801-683-5366



[dbh.utah.org/about/facilities](http://dbh.utah.org/about/facilities)

#### GMS Counseling

370 S 500 E, Suite 250  
Clearfield, Utah 84015  
801-825-4876



[gmscounselingllc.com](http://gmscounselingllc.com)

#### Layton Comprehensive Treatment Center

523 W Heritage Park Blvd. Suite 4  
Layton, UT 84041  
866-854-3035



[ctcprograms.com/location/layton-comprehensive-treatment-center/](http://ctcprograms.com/location/layton-comprehensive-treatment-center/)

#### New Season Treatment Center - Bountiful

763 W 700 S, Suite B  
Woods Cross, UT 84087  
877-284-7074



[newseason.com/treatment-center-locations/utah/bountiful-treatment-center](http://newseason.com/treatment-center-locations/utah/bountiful-treatment-center)

#### Utah Addiction Medicine and Counseling

440 S Medical Dr  
Bountiful, UT 84010  
801-294-8288



[utahamc.com/services](http://utahamc.com/services)

Visit [mihp.utah.gov/opioids](http://mihp.utah.gov/opioids) for a statewide list of resources.

### Key



Accepts families



Detoxification



Outpatient services



Accepts Medicaid and/or financial assistance



Inpatient treatment



Prioritizes pregnant persons



Alumni support network



Medication-assisted treatment or medication for opioid use disorder (MAT/MOUD)



Residential treatment



Case management



Sober living

# Substance use disorder resources

## Davis County



### Name

### Contact

### Services

Davis Behavioral Health

801-683-5366  
[dbh.utah.gov/about/facilities](http://dbh.utah.gov/about/facilities)  
934 S Main Street  
Layton, UT 84041

- Only serves Davis County residents
- Medication for opioid use disorder—includes for pregnant persons
- Residential treatment services
- Intensive and general outpatient services
- Dual diagnosis
- Journey House—for those with chronic mental health conditions
- Maternal mental health specialist

GMS Counseling

801-825-4876  
[gmscounselingllc.com](http://gmscounselingllc.com)  
370 S 500 E, Suite 250  
Clearfield, Utah 84015

- Intensive and general outpatient services
- Dual diagnosis
- Relapse prevention
- Educational and trauma groups

Layton Comprehensive Treatment Center

Intake: 801-899-0191  
801-525-9998  
[ctcprograms.com/location/layton-comprehensive-treatment-center](http://ctcprograms.com/location/layton-comprehensive-treatment-center)  
523 W Heritage Park Blvd., Suite 4  
Layton, UT 84041

- Outpatient treatment
- Methadone clinic
- Medication-assisted treatment center for those struggling with opioid addiction
- Individual and group therapies
- Accepts most insurances and Medicaid

New Season Treatment Center - Bountiful

877-284-7074  
[newseason.com/treatment-center-locations/utah/bountiful-treatment-center](http://newseason.com/treatment-center-locations/utah/bountiful-treatment-center)  
763 W 700 S, Suite B  
Woods Cross, UT 84087

- General outpatient services
- Dual diagnosis
- Medication for opioid use disorder
- Affordable plans available



# Substance use disorder resources

## Davis County



### Name

### Contact

### Services

Utah Addiction  
Medicine and  
Counseling

801-294-8288  
[utahamc.com/services](http://utahamc.com/services)  
440 S Medical Dr  
Bountiful, UT 84010

- Medically managed care including inpatient detox if needed
- Outpatient detox
- Individual and family counseling
- Medication-assisted treatment

## Additional resources for pregnant persons

### **Pregnancy & opioid resources:**

[mihp.utah.gov/opioids](http://mihp.utah.gov/opioids)

### **Pregnancy & opioid resources (en Español):**

[mihp.utah.gov/opioides](http://mihp.utah.gov/opioides)

### **Maternal mental health referral network:**

[maternalmentalhealth.utah.gov/](http://maternalmentalhealth.utah.gov/)

### **Naloxone:**

[naloxone.utah.gov/](http://naloxone.utah.gov/)

### **Never use alone:**

800-484-3731  
[neverusealone.com/](http://neverusealone.com/)

### **Utah support advocates for recovery awareness:**

[myusara.com/](http://myusara.com/)

### **211 Utah:**

[211utah.org/](http://211utah.org/)

# Substance use disorder resources

## Salt Lake County

### BAART Programs

164 E 5900 S, Suite 101  
Murray, UT 84107  
801-261-5790



[baartprograms.com/baart-salt-lake-city](http://baartprograms.com/baart-salt-lake-city)

### Clinical Consultants

7601 S Redwood Rd, Bldg E  
West Jordan, UT 84084  
801-233-8670



[clinicalconsultants.org](http://clinicalconsultants.org)

### Community Wellness: Refugee & Immigrant Center Asian Association of Utah

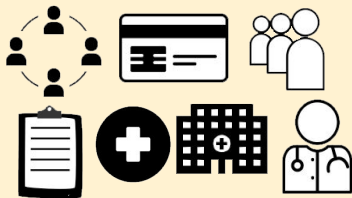
155 S 300 W, Suite 101  
Salt Lake City, UT 84101  
801-467-6060



[aau-slc.org/community-wellness](http://aau-slc.org/community-wellness)

### Courage to Change Program – Salt Lake Behavioral Health

3802 700 East  
South Salt Lake, UT 84106  
801-264-6000



[couragetochangeprogram.com](http://couragetochangeprogram.com)

### First Step House

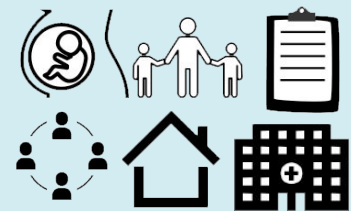
434 S 500 E (2nd floor)  
Salt Lake City, UT 84102  
801-359-8862



[firststephouse.org](http://firststephouse.org)

### House of Hope

857 E 200 S  
Salt Lake City, UT 84102  
801-487-3276



[houseofhopeut.org](http://houseofhopeut.org)

Visit [mihp.utah.gov/opioids](http://mihp.utah.gov/opioids) for a statewide list of resources.

## Key



Accepts families



Detoxification



Outpatient services



Accepts Medicaid and/or  
financial assistance



Inpatient treatment



Prioritizes pregnant  
persons



Alumni support  
network



Medication-assisted  
treatment or  
medication for  
opioid use disorder  
(MAT/MOUD)



Residential treatment



Case management



Sober living

# Substance use disorder resources

## Salt Lake County

**Odyssey House**  
344 E 100 S, Suite 301  
Salt Lake City, UT 84111  
801-322-3222

odysseyhouse.org

**Project Reality**  
150 E 700 S  
Salt Lake City, UT 84111  
801-364-8080

projectreality.net

**Recovery Clinic –  
Huntsman Mental  
Health Institute**  
501 Chipeta Way  
Salt Lake City, UT 84108  
801-583-2500

healthcare.utah.edu/hmhi/treatments/addiction-recovery/recovery-clinic.php

**Steps Recovery Centers**  
Draper and Murray locations  
801-800-8142

stepsrc.com

**Substance Use in Pregnancy  
Recovery Addiction Dependence  
Clinic (SUPeRAD)**  
50 N Medical Dr Salt Lake City, UT 84108 801-581-8425  
5126 W Daybreak Parkway South Jordan, UT 84009 801-581-8425

medicine.utah.edu/internal-medicine/epidemiology/parcka/patient-care

**Volunteers of America**  
Cornerstone counseling and center for women & children  
Locations in Salt Lake City and Murray, UT  
801-363-9414

voaut.org

**Valley Behavioral Health**  
Locations across Salt Lake Valley  
801-263-7100

valleycares.com

Visit [mihp.utah.gov/opioids](http://mihp.utah.gov/opioids) for a statewide list of resources.

### Key

Accepts families	Detoxification	Outpatient services
Accepts Medicaid and/or financial assistance	Inpatient treatment	Prioritizes pregnant persons
Alumni support network	Medication-assisted treatment or medication for opioid use disorder (MAT/MOUD)	Residential treatment
Case management		Sober living

# Substance use disorder resources

## Salt Lake County



Name	Contact	Services
A/D Psychotherapy & Clinical Consulting, Inc.	801-233-8577 adpsychotherapy.com 9662 S 700 E Sandy, UT 84070	<ul style="list-style-type: none"> <li>• Substance-use disorder (SUD) assessment and evaluation</li> <li>• Intensive and general outpatient</li> <li>• Dual diagnosis</li> <li>• Long-term aftercare—workshops, education</li> </ul>
Ascendant Behavioral Health	801-872-5516 ascendantclinics.com □ 5383 S 900 E, Suite 103 Murray, UT 84117	<ul style="list-style-type: none"> <li>• General outpatient services</li> <li>• Mental health counseling and addiction counseling Includes cognitive behavioral therapy (CBT) medication-assisted treatment (MAT) approved by a psychiatrist</li> <li>• Accepts most major insurance and bishop pay</li> </ul>
Anicka Counseling Center	385-333-6403 anickacounselingcenter.org 3195 S Main St, Suite 260 Salt Lake City, UT 84115	<ul style="list-style-type: none"> <li>• Medication for opioid use disorder (OUD), like buprenorphine</li> <li>• PRIME for Life</li> <li>• Outpatient/office treatment</li> <li>• Relapse prevention</li> <li>• Trauma counseling</li> <li>• Accepts Medicaid, private pay, and insurance</li> </ul>
Asian Association of Utah: Refugee and Immigrant Center Community Wellness Program	801-467-6060 aau-slc.org/community-wellness 155 S 300 W, Suite 101 Salt Lake City, UT 84101	<ul style="list-style-type: none"> <li>• Priority populations: Asian American and Pacific Islander, persons of color, immigrants, and refugees</li> <li>• Dual diagnosis</li> <li>• Outpatient mental health/SUD treatment</li> <li>• Psychiatric medication management</li> <li>• Medicaid and insurance navigators available</li> </ul>
Assessment Counseling and Educational Services	801-265-8000 acestreatment.org/index.html 547 W 3900 S, Suite F Millcreek, UT 84123	<ul style="list-style-type: none"> <li>• Dual diagnosis</li> <li>• Outpatient treatment only</li> <li>• Motivational enhancement therapy model</li> <li>• Random urinalysis</li> <li>• Aftercare—discounted rates available</li> <li>• Sliding scale fees based on income</li> </ul>

# Substance use disorder resources

## Salt Lake County



Name	Contact	Services
Assessment & Referral Services (ARS)	<p>801-587-2770</p> <p><a href="http://medicine.utah.edu/psychiatry/assessment-referral-services">medicine.utah.edu/psychiatry/assessment-referral-services</a></p> <p>450 S 900 E, Suite 300 Salt Lake City, UT 84120</p>	<ul style="list-style-type: none"> <li>• SUD assessment and evaluation</li> <li>• Interim group sessions for those waiting for treatment referrals to SLC behavioral health services</li> <li>• Accepts Medicaid, sliding scale fee service option</li> </ul>
BAART Programs, SLC	<p>801-261-5790</p> <p><a href="http://baartprograms.com/baart-salt-lake-city">baartprograms.com/baart-salt-lake-city</a></p> <p>164 E 5900 S, Suite 101 Murray, UT 84107</p>	<ul style="list-style-type: none"> <li>• Medication for opioid use disorder, including methadone and buprenorphine/naloxone</li> <li>• Outpatient counseling</li> <li>• Accepts Medicaid and Medicare Part B</li> </ul>
Changes Counseling	<p>801-542-7060</p> <p><a href="http://changescounseling.org/addiction-therapy">changescounseling.org/addiction-therapy</a></p> <p>8221 S 700 E Sandy, UT 84070</p>	<ul style="list-style-type: none"> <li>• Intensive and general outpatient services</li> <li>• Therapies focus on identifying triggers, problem solving and coping, relapse prevention, skill and relationship building, alcohol and drug education</li> <li>• Addiction and recovery counseling</li> <li>• Accepts private insurance, Medicaid, and self-pay</li> </ul>
CLD3 Counseling	<p>801-521-4227</p> <p><a href="http://cld3counseling.com">cld3counseling.com</a></p> <p>352 S Denver St, Suite 350 Salt Lake City, UT 84111</p>	<ul style="list-style-type: none"> <li>• Holistic substance use disorder and opioid use disorder treatment</li> <li>• Dual diagnosis</li> <li>• PRIME for Life</li> <li>• General and intensive outpatient services</li> <li>• Individual, family, and group therapy</li> </ul>
Clinical Consultants	<p>(801) 233-8670</p> <p><a href="http://clinicalconsultants.org">clinicalconsultants.org</a></p> <p>7601 S. Redwood Road, Bldg E West Jordan, Utah 84084</p>	<ul style="list-style-type: none"> <li>• Medication for opioid use disorder</li> <li>• Dual diagnosis</li> <li>• Assessment and evaluation</li> <li>• Intensive and general outpatient treatment</li> <li>• Connection to social services</li> <li>• Case management</li> </ul>

# Substance use disorder resources

## Salt Lake County



Name	Contact	Services
Comprehensive Treatment Centers - Salt Lake City	<p>Intake: 801-899-0191 Salt Lake: 801-596-2111</p> <p><a href="http://ctcprograms.com/location/salt-lake-city-comprehensive-treatment-center">ctcprograms.com/location/salt-lake-city-comprehensive-treatment-center</a></p> <p>448 E 2100 S Salt Lake City, UT 84115</p>	<ul style="list-style-type: none"> <li>• Medication assisted treatment</li> <li>• Counseling</li> <li>• Outpatient detox</li> <li>• Accepts Medicaid</li> </ul>
Comprehensive Treatment Centers - Taylorsville	<p>Intake: 801-899-0191 Taylorsville: 801-293-9999</p> <p><a href="http://ctcprograms.com/location/taylorsville-comprehensive-treatment-center">ctcprograms.com/location/taylorsville-comprehensive-treatment-center</a></p> <p>5983 S Redwood Rd Taylorsville, UT 84123</p>	<ul style="list-style-type: none"> <li>• Medication assisted treatment</li> <li>• Counseling</li> <li>• Outpatient detox</li> <li>• Accepts Medicaid</li> </ul>
Collective Recovery Center	<p>385-557-2183</p> <p><a href="http://collectiverecoverycenter.com/services/drug-recovery-treatment">collectiverecoverycenter.com/services/drug-recovery-treatment</a></p> <p>9543 S 700 E, Suite 200 Sandy, UT 84070</p>	<ul style="list-style-type: none"> <li>• Intensive and general outpatient services</li> <li>• Dual diagnosis</li> <li>• Virtual appointments</li> <li>• Holistic approach</li> <li>• Accepts Blue Cross Blue Shield, FirstHealth, Medicaid, and WISE provider network</li> </ul>
Courage to Change Program - Salt Lake Behavioral Health Clinic	<p>801-264-6000</p> <p><a href="http://couragetochangeprogram.com">couragetochangeprogram.com</a></p> <p>3802 S 700 E South Salt Lake, UT 84106</p>	<ul style="list-style-type: none"> <li>• Medication-assisted treatment</li> <li>• Intensive outpatient and inpatient care</li> <li>• Detox programs and case management</li> <li>• Cognitive behavioral therapy</li> <li>• Accepts most insurance</li> <li>• Provides financial assistance for those who need it</li> </ul>
De Novo Services	<p>801-263-1056</p> <p><a href="http://denovoservices.org">denovoservices.org</a></p> <p>339 East 3900 South, #155 Salt Lake City, UT 84107</p>	<ul style="list-style-type: none"> <li>• Alcohol use treatment</li> <li>• Substance use counseling for individuals</li> <li>• Group therapy</li> <li>• Counseling for friends and families of individuals with substance use disorders</li> </ul>

# Substance use disorder resources

## Salt Lake County



### Name

### Contact

### Services

Highland Ridge  
Hospital

855-402-1096  
[highlandridgehospital.com/programs/substance-abuse](http://highlandridgehospital.com/programs/substance-abuse)  
7309 S 180 W  
Midvale, UT 84047

- Inpatient treatment
- Intensive and general outpatient services
- Provides detoxification
- Dual diagnosis
- 12-step
- Substance specific treatment options

Highland Springs  
Specialty Clinic

Local: 801-536-6545  
Text: 385-474-8889  
[highlandspringsclinic.org/substance-abuse-treatment](http://highlandspringsclinic.org/substance-abuse-treatment)  
12427 S Pasture Rd, Suite 104  
Riverton, UT 84065

- General outpatient treatment
- Dual diagnosis
- Telehealth options
- Psychiatric medication management

House of Hope

801-487-3276  
[houseofhopeut.org](http://houseofhopeut.org)  
857 E 200 S  
Salt Lake City, UT 84102

- Focuses on pregnant women and their families
- Inpatient treatment
- Residential treatment
- Outpatient treatment
- Allows mother to bring in 2 children with them at time of residential treatment
- Outreach and aftercare for alumni

Huntsman Mental  
Health Institute

801-583-2500  
[healthcare.utah.edu/hmhi/treatments/addiction-recovery](http://healthcare.utah.edu/hmhi/treatments/addiction-recovery)  
501 Chipeta Way  
Salt Lake City, UT 84108

- Detoxification center
- Inpatient services
- Intensive and general outpatient services
- Dual diagnosis
- Psychiatric medication management
- SMART recovery model
- Medication for opioid use disorder

# Substance use disorder resources

## Salt Lake County



### Name

### Contact

### Services

Intermountain  
Healthcare  
"Dayspring"

801-314-2600

[intermountainhealthcare.org/services/behavioral-health/dayspring](http://intermountainhealthcare.org/services/behavioral-health/dayspring)

5770 S 25 E, Suite 300  
Murray, UT 84107

- Intensive and general outpatient services
- Medication-assisted treatment
- Dual diagnosis
- Group and individual treatment
- Drug testing
- Outreach and aftercare for alumni

Jordan Valley  
Medical Center: New  
Vision

801-964-3921

[jordanvalleymc.org/services-directory/substance-abuse](http://jordanvalleymc.org/services-directory/substance-abuse)

3580 W 9000 S  
West Jordan, UT 84088

- Inpatient medical stabilization and detoxification
- Assessment and evaluation
- Accepts some insurance and Medicaid

Jordan West Family  
Counseling

801-556-0749

[jwfc.info](http://jwfc.info)

9263 Redwood Rd, Bldg 8  
West Jordan, UT 84088

- General outpatient services
- Community mental health agency
- Dual diagnosis

Latino Behavioral  
Health Services

801-935-4447

[latinobehavioral.org](http://latinobehavioral.org)

3471 S W Temple  
Salt Lake City, UT 84115

- Priority population: Hispanic and Latino
- Community education, advocacy, and prevention
- Peer counseling and mentorship
- Support groups
- Individual and family therapy regarding addiction



# Substance use disorder resources

## Salt Lake County



### Name

### Contact

### Services

Multicultural  
Counseling Center

801-915-0359  
[mccounseling.com/substance-abuse-services](http://mccounseling.com/substance-abuse-services)  
7625 S 3200 W, Suite 2 & 4  
West Jordan, UT 84084

- Priority population: Black, Indigenous, and people of color (BIPOC)
- Outpatient services
- Dual diagnosis
- Case management

Next Level Recovery

888-759-5846  
[nextlevelrecovery.com/opiate-addiction-treatment-in-utah-2](http://nextlevelrecovery.com/opiate-addiction-treatment-in-utah-2)  
6771 S 900 E  
Midvale, UT 84047

- Opioid use disorder specific treatment program
- General outpatient services
- Sister company provider of Sober Living Housing
- Dual diagnosis
- Connection to sober living facilities
- Accepts private insurance, self-pay financing options

Odyssey House

801-322-3222  
[odysseyhouse.org](http://odysseyhouse.org)  
344 E 100 S  
Salt Lake City, UT 84111

- Residential treatment program
- Case management
- Allows families and provides family therapy
- Intensive and general outpatient therapy
- 48 funding contractors, also coverage by insurance and Medicaid

Pathways  
Real Life Recovery

801-509-9003  
[pathwaysreallife.com/programs](http://pathwaysreallife.com/programs)  
230 W Towne Ridge Pkwy,  
Suite 105  
Sandy, UT 84070

- Intensive and general outpatient services
- Women's and men's residential recovery services
- Assessment and evaluation
- Evidence-based treatment strategies
- Inpatient services

# Substance use disorder resources

## Salt Lake County



### Name

### Contact

### Services

Project Reality

801-364-8080  
projectreality.net  
150 E 700 S  
Salt Lake City, UT 84111

- Medication for opioid use disorder
- Dual diagnosis
- Outpatient treatment
- Primary medical care
- Harm reduction and prevention
- Multiple clinic locations and hours

Red Mesa Behavioral  
Health Urban Indian  
Center of Salt Lake

801-486-4877  
uicsl.org/departments/red-mesa  
120 W 1300 S  
Salt Lake City, UT 84115

- Assessment and evaluation
- Intensive and general outpatient services
- Dual diagnosis
- Holistic treatment

Red Willow  
Counseling Services

385-313-0055  
redwillowcounseling.com  
1425 S 700 E, Suite 102  
Salt Lake City, UT 84105

- Assessment and evaluation
- Intensive and general outpatient services
- Family intervention models
- Continuing care and long-term support
- Telehealth options

Redwood Recovery  
Foundation for  
Family Life/Mentor  
Works

801-679-3921  
rr.fflut.org  
11978 S Redwood  
Riverton, UT 84065

- Assessment and evaluation
- Intensive and general outpatient services
- Drug test 2-3 times a week
- Case management and substance abuse assessments
- Peer support and coaching

Renew Wellness and  
Recovery

801-890-1000  
renewwellnessrecovery.com  
9500 S 500 W, #213  
Sandy, UT 84070

- 7 bed residential treatment service for women
- Trauma and physical wellness focus
- Peer coaching
- Discharge planning
- Accepts most private insurance (not Medicaid)

# Substance use disorder resources

## Salt Lake County



Name	Contact	Services
Salson Clinics	801-666-8640 <a href="http://salsonclinics.com/addiction-recovery">salsonclinics.com/addiction-recovery</a> 1745 W 7800 S West Jordan, UT 84088	<ul style="list-style-type: none"><li>• Medication for opioid use disorder</li><li>• Medication assistance therapy counseling—outpatient basis</li><li>• Accepts most insurance</li></ul>
Salt Lake Behavioral Health: Courage to Change Program	801-264-6000 <a href="http://couragetochangeprogram.com">couragetochangeprogram.com</a> 3802 S 700 E South Salt Lake, UT 84106	<ul style="list-style-type: none"><li>• Assessment and evaluation at no cost</li><li>• Detoxification</li><li>• Medication for opioid use disorder</li><li>• Treats underlying trauma as root cause for addiction</li><li>• Motivational interviewing, skill building sessions, group education</li></ul>
SLC Behavioral Health Services	385-468-4707 <a href="http://slco.org/behavioral-health">slco.org/behavioral-health</a> 2001 S State St, S2-300 Salt Lake City, UT 84190	<ul style="list-style-type: none"><li>• Assessment, evaluations, referral out to appropriate levels of care</li><li>• Accepts Medicaid, sliding scale fees</li><li>• Priority population: pregnant and parenting persons, IV drug users</li></ul>
Smart Medical	801-209-7232 <a href="http://opiates.net/center/smart-medical-salt-lake-city-ut">opiates.net/center/smart-medical-salt-lake-city-ut</a> 6337 S Highland Dr. Salt Lake City, UT 84121	<ul style="list-style-type: none"><li>• Heroin and opioid detoxification center (not for pregnant persons)</li><li>• Intensive and general outpatient services</li><li>• General outpatient opioid use disorder services</li><li>• Medication for opioid use disorder options</li></ul>
South Point Counseling Services	801-302-3801 <a href="http://southpointcs.com/substance-abuse">southpointcs.com/substance-abuse</a> 1206 W South Jordan Parkway, Suite D South Jordan, UT 84095	<ul style="list-style-type: none"><li>• Intensive and general outpatient services</li><li>• Dual diagnosis</li><li>• Includes court-ordered treatment intensive and general outpatient services</li><li>• Residential services</li></ul>

# Substance use disorder resources

## Salt Lake County



Name	Contact	Services
Steps Recovery Centers	801-800-8142 <a href="http://stepsrc.com/facilities/drapeer">stepsrc.com/facilities/drapeer</a> 345 E 4500 S, #100 Murray, UT 84107	<ul style="list-style-type: none"> <li>• Intensive and general outpatient services</li> <li>• Residential services</li> <li>• Dual diagnosis</li> <li>• Family support</li> <li>• Aftercare with alumni support network</li> <li>• Accepts Medicaid, most private insurance</li> </ul>
Tranquility Place	801-924-9240 <a href="http://tranquility-place.com/home">tranquility-place.com/home</a> 160 E 800 S, Suite B Salt Lake City, UT 84111	<ul style="list-style-type: none"> <li>• Individual counseling</li> <li>• Group counseling</li> <li>• Medication assisted treatment and opioid replacement therapy</li> <li>• Medical dosing evaluation</li> <li>• Bloodwork analysis</li> </ul>
Turning Point Centers	888-979-7704 <a href="http://turningpointcenters.com">turningpointcenters.com</a> Locations across Utah	<ul style="list-style-type: none"> <li>• Assessment and evaluation</li> <li>• Intensive and general outpatient services</li> <li>• Dual diagnosis</li> <li>• Medication for opioid use disorder, as needed</li> <li>• Accepts private insurance - insurance verification of coverage is available online</li> </ul>
Utah Harm Reduction Coalition	Office: 801-569-1995 Treatment: 385-275-6162 <a href="http://utahharmreduction.org">utahharmreduction.org</a> 91 E Fort Union Boulevard Midvale, UT 84047	<ul style="list-style-type: none"> <li>• General outpatient services</li> <li>• Virtual appointments</li> <li>• Needle exchange and removal program</li> <li>• Accepts Medicaid, TAM, Blue Cross Blue Shield, Select Health, and UofU Health insurance</li> </ul>
Utah Partners for Health: Behavioral Health Clinic	801-417-0131 <a href="http://upfh.org">upfh.org</a> 8446 S. Harrison St. Midvale, UT 84047	<ul style="list-style-type: none"> <li>• General outpatient services</li> <li>• Dual diagnosis</li> <li>• Offers services in English and Spanish</li> <li>• Included topics: grief, trauma, domestic violence, parent-child relationships, mood, stress</li> <li>• No charge for services</li> </ul>

# Substance use disorder resources

## Salt Lake County



### Name

### Contact

### Services

Valley Behavioral Health

Toll Free: 888-949-4864  
Utah: 801-263-7100

[valleycares.com](http://valleycares.com)

3809 W 6200 S  
Kearns, UT 84118

- Assessment and evaluation
- Residential services for women and children (Valley Phoenix)
- Intensive and general outpatient services
- Dual diagnosis
- Medication for opioid use disorder

Volunteers of America, Utah

801-363-9414

[voaut.org/mission-facilities](http://voaut.org/mission-facilities)

432 W Bearcat Dr.  
Salt Lake City, UT 84115

- Detoxification center—14 day stay for moms and their children
- General outpatient services
- Dual diagnosis

## Additional resources for pregnant persons

### Pregnancy & opioid resources:

[mihp.utah.gov/opioids](http://mihp.utah.gov/opioids)

### Pregnancy & opioid resources (en Español):

[mihp.utah.gov/opioides](http://mihp.utah.gov/opioides)

### Maternal mental health referral network:

[maternalmentalhealth.utah.gov/](http://maternalmentalhealth.utah.gov/)

### Naloxone:

[naloxone.utah.gov/](http://naloxone.utah.gov/)

### Never use alone:

800-484-3731

[neverusealone.com/](http://neverusealone.com/)

### Utah support advocates for recovery awareness:

[myusara.com/](http://myusara.com/)

### 211 Utah:

[211utah.org/](http://211utah.org/)

# Substance use disorder resources

## San Juan County

Blanding Family Practice  
Community Health Center -  
Utah Navajo Health System  
910 S. 300 W.  
Blanding, UT 84511  
435-678-0700



unhsinc.org

San Juan Counseling  
735 South 200 West, Suite 1  
Blanding, UT 84511  
435-678-2992



sanjuancc.org

Visit [mihp.utah.gov/opioids](http://mihp.utah.gov/opioids) for a statewide list of resources.

### Key



Accepts families



Detoxification



Outpatient services



Accepts Medicaid and/or  
financial assistance



Inpatient treatment



Prioritizes pregnant  
persons



Alumni support  
network



Medication-assisted  
treatment or  
medication for  
opioid use disorder  
(MAT/MOUD)



Residential treatment



Case management



Sober living

# Substance use disorder resources

## San Juan County



Name	Contact	Services
Blue Mountain Hospital	435-678-3993 bmh.utah.org 802 S 200 W Blanding, UT 84511	<ul style="list-style-type: none"><li>• Accepts Medicaid</li><li>• Alcohol withdrawal monitoring</li><li>• Alcohol withdrawal treatment</li></ul>
San Juan Counseling	435-678-2992 sanjuancc.org 735 S 200 W, Suite 1 Blanding, UT 84511	<ul style="list-style-type: none"><li>• Outpatient mental health and substance use counseling</li><li>• Dual diagnosis</li><li>• State certified DUI program</li><li>• Sliding scale fees</li></ul>
Utah Navajo Health System - Blanding Family Practice Community Health Center	435-678-0700 unhsinc.org 910 S 300 W Blanding, UT 84511	<ul style="list-style-type: none"><li>• Substance use disorder assessment and treatment</li><li>• Dual diagnosis</li><li>• Offers behavioral health services</li></ul>

### Additional resources for pregnant persons

#### **Pregnancy & opioid resources:**

[mihp.utah.gov/opioids](http://mihp.utah.gov/opioids)

#### **Pregnancy & opioid resources (en Español):**

[mihp.utah.gov/opioides](http://mihp.utah.gov/opioides)

#### **Maternal mental health referral network:**

[maternalmentalhealth.utah.gov/](http://maternalmentalhealth.utah.gov/)

#### **Naloxone:**

[naloxone.utah.gov/](http://naloxone.utah.gov/)

#### **Never use alone:**

800-484-3731

[neverusealone.com/](http://neverusealone.com/)

#### **Utah support advocates for recovery awareness:**

[myusara.com/](http://myusara.com/)

#### **211 Utah:**

[211utah.org/](http://211utah.org/)

# Substance use disorder resources

## Southeast Utah Health Department

**Carbon Medical Services Association**  
331 E Highway 123  
Sunnyside, UT 84526  
435-888-4411



carbonmedicalsevice.com

**Carbon Medical Services Association: Helper Clinic**  
125 S Main St  
Helper, UT 84526  
435-472-7000



carbonmedicalsevice.com

**Eastern Utah Women's Health**  
77 S 600 E Suite B  
Price, UT 84501  
435-637-0313



easternutahwomenshealth.com

**Life Balance Recovery**  
90 W 100 N Suite 17  
Price, UT 84501  
801-367-0394



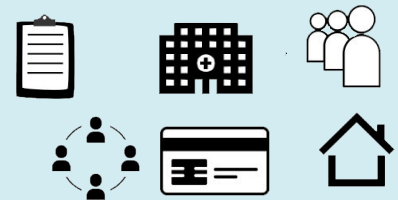
lifebalancerecovery.com/services

**Positive Pathways**  
23 S Carbon Ave, Suite 201  
Price, UT 84501  
435-299-5003



sabrinakcarter.wixsite.com/positivepathways

**Four Corners Behavioral Health**  
Locations in: Castle Dale, Green River, Moab, and Price, UT



fourcorners.ws

Visit [mihp.utah.gov/opioids](http://mihp.utah.gov/opioids) for a statewide list of resources.

### Key



Accepts families



Detoxification



Outpatient services



Accepts Medicaid and/or financial assistance



Inpatient treatment



Prioritizes pregnant persons



Alumni support network



Medication-assisted treatment or medication for opioid use disorder (MAT/MOUD)



Residential treatment



Case management



Sober living



# Substance use disorder resources

## Southeast Utah Health Department



### Name

### Contact

### Services

Carbon Medical  
Services Association

435-888-4411  
[carbonmedicalsevice.com](http://carbonmedicalsevice.com)  
331 Highway 123  
Sunnyside, UT 84539

- Medication for opioid use disorder
- General outpatient services (office-based)
- Accepts most private insurance
- Sliding scale payment available

Carbon Medical  
Services Association:  
Helper Clinic

435-472-7000  
[carbonmedicalsevice.com](http://carbonmedicalsevice.com)  
□  
125 S Main St  
Helper, UT 84624

- Medication for opioid use disorder
- General outpatient services (office-based)
- Accepts most private insurance
- Sliding scale payment available

Eastern Utah  
Women's Health

435-637-0313  
[easternutahwomenshealth.com](http://easternutahwomenshealth.com)  
77 S 600 E, Suite B  
Price, UT 84501

- Medication for opioid use disorder
- Medical and mental health services
- General outpatient services (office-based)
- Sliding scale payment available

Four Corners  
Behavioral Health

[fourcorners.ws/appointment.html](http://fourcorners.ws/appointment.html)  
Locations in: Castle Dale, Green  
River, Moab, and Price, UT

- Assessment and evaluation
- Inpatient treatment services
- Intensive and general outpatient services
- Dual diagnosis
- Psychiatric medication management
- Accepts Medicaid
- Sliding scale payment available

Green River Medical  
Center

435-564-3434  
[frontdesk@grmc.biz](mailto:frontdesk@grmc.biz)  
[grmedicalcenter.org/services](http://grmedicalcenter.org/services)  
585 W Main St  
Green River, UT 84525

- General outpatient services (office-based)
- Dual diagnosis

# Substance use disorder resources

## Southeast Utah Health Department



### Name

### Contact

### Services

LDS: Family Services and Counseling

435-637-2991

[providentliving.churchofjesuschrist.org/lds-family-services?lang=eng](http://providentliving.churchofjesuschrist.org/lds-family-services?lang=eng)

630 W Price River Dr  
Price, UT 84501

- General outpatient services - office based
- Support groups
- Faith based treatment - referred in by bishop

Life Balance Recovery

801-367-0394

[lifebalancerecovery.com/services](http://lifebalancerecovery.com/services)

90 W 100 N, Suite 17  
Price, UT 84501

- Day treatment, intensive and general outpatient services
- Sober living beds
- Drug testing and assessments
- Peer support with alumni network
- Accepts most major insurance plans, Medicaid, sliding scale fee

Moab Regional Hospital - Addiction Medicine

435-719-3500

[mrhmoab.org/addiction-medicine](http://mrhmoab.org/addiction-medicine)

450 Williams Way  
Moab, UT 84532

- General outpatient services (office-based)
- Dual diagnosis

Positive Pathways

435-299-5003

[sabinakcarter.wixsite.com/positivepathways](http://sabinakcarter.wixsite.com/positivepathways)

23 S Carbon Ave, Suite 201  
Price, UT 84501

- Medication for opioid use disorder
- General outpatient services (office-based)
- Accepts sliding scale fee and grant options; call for insurance verification

True North Recovery and Wellness Center

435-673-1004  
[support@iamrc.com](mailto:support@iamrc.com)

[truenorthutah.com](http://truenorthutah.com)

640 E 700 S, Bldg 3  
St. George, UT 84770

- Medication for opioid use disorder
- PRIME for Life
- General outpatient services (office-based)
- Accepts most insurance, Medicaid; call to determine eligibility

## **Additional resources for pregnant persons**

**Pregnancy & opioid resources:**

[mihp.utah.gov/opioids](http://mihp.utah.gov/opioids)

**Pregnancy & opioid resources (en Español):**

[mihp.utah.gov/opioides](http://mihp.utah.gov/opioides)

**Maternal mental health referral network:**

[maternalmentalhealth.utah.gov/](http://maternalmentalhealth.utah.gov/)

**Naloxone:**

[naloxone.utah.gov/](http://naloxone.utah.gov/)

**Never use alone:**

800-484-3731

[neverusealone.com/](http://neverusealone.com/)

**Utah support advocates for recovery awareness:**

[myusara.com/](http://myusara.com/)

**211 Utah:**

[211utah.org/](http://211utah.org/)

# Substance use disorder resources

## Southwest Utah Public Health Department



**Desert Haven:  
Southwestern  
Behavioral Health**  
Call for address  
435-634-5600

[sbhc.us/services/substance-use-disorders](http://sbhc.us/services/substance-use-disorders)

**Four Points Health**  
440 N Paiute Dr.  
Cedar City, Utah 84721  
435-867-1520

[fourpointshhealth.org/services](http://fourpointshhealth.org/services)

**Lions Gate Recovery**  
Locations in St. George and  
Cedar City  
866-471-9476

[lionsgaterehab.com](http://lionsgaterehab.com)

**Southwest Behavioral  
Health**  
Multiple locations across  
Southwestern Utah  
Admin Office: 435-634-5600

[sbhc.us/services/substance-use-disorders](http://sbhc.us/services/substance-use-disorders)

**St. George Metro  
Treatment Center**  
620 S 400 E, Suite 404  
St. George, UT 84770  
877-284-7074

[newseason.com/treatment-center-locations/utah/st-george-metro-treatment-center](http://newseason.com/treatment-center-locations/utah/st-george-metro-treatment-center)

**Steps Recovery Center**  
Outpatient:  
1085 S Bluff St  
St. George, UT 84770  
Residential  
3638 Sugar Leo Dr.  
St. George, UT 84790  
801-800-8142

[stepsrc.com](http://stepsrc.com)

Visit [mihp.utah.gov/opioids](http://mihp.utah.gov/opioids) for a statewide list of resources.

### Key



Accepts families



Detoxification



Outpatient services



Accepts Medicaid and/or financial assistance



Inpatient treatment



Prioritizes pregnant persons



Alumni support network



Medication-assisted treatment or medication for opioid use disorder (MAT/MOUD)



Residential treatment



Case management



Sober living

# Substance use disorder resources

## Southwest Utah Public Health Department



Name	Contact	Services
Four Points Health	<p>435-867-1520</p> <p><a href="http://fourpointshealth.org/services">fourpointshealth.org/services</a></p> <p>440 N Paiute Dr. Cedar City, Utah 84721</p>	<ul style="list-style-type: none"> <li>• Dual diagnosis</li> <li>• Substance abuse assessments</li> <li>• Intensive and general outpatient substance abuse counseling</li> <li>• Residential treatment for substance abuse (Tribal members only)</li> </ul>
Lions Gate Recovery	<p>866-471-9476</p> <p><a href="http://lionsgaterehab.com">lionsgaterehab.com</a></p> <p>Locations in St. George and Cedar City</p>	<ul style="list-style-type: none"> <li>• Day treatment, intensive, and general outpatient services</li> <li>• Residential services</li> <li>• Dual diagnosis</li> <li>• Medication for opioid use disorder available at the Dixie Medical Arts campus</li> <li>• Aftercare and support with peer alumni</li> </ul>
Renaissance Recovery	<p>435-703-9840</p> <p><a href="http://recoverywithrenaissance.com">recoverywithrenaissance.com</a></p> <p>491 E Riverside Dr, Suite 1A St George, UT 84790</p>	<ul style="list-style-type: none"> <li>• Intensive and general outpatient services</li> <li>• Day treatment/partial hospitalization</li> <li>• Dual diagnosis</li> <li>• Oxford House—sober living space</li> <li>• Accepts most private insurance, scholarships and affordable options also available</li> </ul>
St. George Metro Treatment Center	<p>877-284-7074</p> <p><a href="http://newseason.com/treatment-center-locations/utah/st-george-metro-treatment-center">newseason.com/treatment-center-locations/utah/st-george-metro-treatment-center</a></p> <p>620 S 400 E, Suite 404 St. George, UT 84770</p>	<ul style="list-style-type: none"> <li>• General outpatient services</li> <li>• Dual diagnosis</li> <li>• Medication for opioid use disorder</li> <li>• Affordable plans available</li> </ul>
Southwest Behavioral Health Centers	<p>Administrative Office: 435-634-5600</p> <p><a href="http://sbhc.us/services/substance-use-disorders">sbhc.us/services/substance-use-disorders</a></p> <p>Multiple locations across Southwestern Utah</p>	<ul style="list-style-type: none"> <li>• Residential treatment services</li> <li>• Intensive and general outpatient services</li> <li>• Dual diagnosis</li> <li>• Desert Haven—residential program for women with children</li> </ul>

# Substance use disorder resources

## Southwest Utah Public Health Department



Name	Contact	Services
Steps Recovery Center	801-800-8142 stepsrc.com  Outpatient: 1085 S. Bluff St St. George, UT 84770 Residential 3638 Sugar Leo Dr. St. George, UT 84790	<ul style="list-style-type: none"><li>• Intensive and general outpatient services</li><li>• Residential services</li><li>• Dual diagnosis</li><li>• Family support</li><li>• Aftercare with alumni support network</li><li>• Accepts Medicaid, most private insurance</li></ul>
Therapy Associates	435-862-8273  therapyassociates.net/substanceab usetherapy  377 E Riverside Dr, Bldg B St. George, UT 84790	<ul style="list-style-type: none"><li>• Intensive and general outpatient services</li><li>• Dual diagnosis</li><li>• Early intervention options</li><li>• Accepts most private insurance, some Medicaid and Medicare, Employee Assistance Programs</li><li>• PRIME for Life</li></ul>
True North Recovery and Wellness Center	435-673-1004  truenorthutah.com  640 E 700 S, Bldg 3 St. George, Utah 84770	<ul style="list-style-type: none"><li>• Medication for opioid use disorder</li><li>• PRIME for Life</li><li>• General outpatient services (office-based)</li><li>• Accepts most insurance, Medicaid; call to determine eligibility</li></ul>

### Additional resources for pregnant persons

#### **Pregnancy & opioid resources:**

[mihp.utah.gov/opioids](http://mihp.utah.gov/opioids)

#### **Pregnancy & opioid resources (en Español):**

[mihp.utah.gov/opioides](http://mihp.utah.gov/opioides)

#### **Maternal mental health referral network:**

[maternalmentalhealth.utah.gov/](http://maternalmentalhealth.utah.gov/)

#### **Naloxone:**

[naloxone.utah.gov/](http://naloxone.utah.gov/)

#### **Never use alone:**

800-484-3731

[neverusealone.com/](http://neverusealone.com/)

#### **Utah support advocates for recovery awareness:**

[myusara.com/](http://myusara.com/)

#### **211 Utah:**

[211utah.org/](http://211utah.org/)

# Substance use disorder resources

## Summit County

### Expansive Horizons Counseling

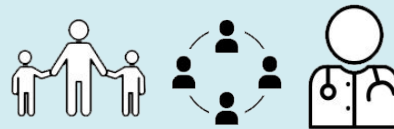
228 W 200 S, Suite 2E  
Kamas, UT 84036  
801-360-6955



[expansivehorizons.net](http://expansivehorizons.net)

### Intermountain Healthcare Round Valley Psychiatry & Counseling

750 Round Valley Dr, Suite 202  
Park City, UT 84060  
435-649-7680



[intermountainhealthcare.org](http://intermountainhealthcare.org)

### Red Willow Counseling

1901 Prospector Ave # 30  
Park City, UT 84060  
801-449-0548



[redwillowcounseling.com](http://redwillowcounseling.com)

### Huntsman Mental Health Institute Park City Clinic

1820 Sidewinder Dr, Suite 100  
Park City, UT 84060  
435-658-9998



[healthcare.utah.edu/locations/park-city-behavioral-clinic](http://healthcare.utah.edu/locations/park-city-behavioral-clinic)

Visit [mihp.utah.gov/opioids](http://mihp.utah.gov/opioids) for a statewide list of resources.

## Key



Accepts families



Detoxification



Outpatient services



Accepts Medicaid and/or financial assistance



Inpatient treatment



Prioritizes pregnant persons



Alumni support network



Medication-assisted treatment or medication for opioid use disorder (MAT/MOUD)



Residential treatment



Case management



Sober living

# Substance use disorder resources

## Summit County



### Name

### Contact

### Services

Expansive Horizons  
Counseling

801-360-6955  
[expansivehorizons.net](http://expansivehorizons.net)  
228 W 200 S, Suite 2E  
Kamas, UT 84036

- All insurance plans accepted, including Medicaid
- Individual, family, and group therapy
- Outpatient recovery clinic
- Substance abuse assessment and treatment
- Evening hours may be available by special appointment

Huntsman Mental  
Institute Park City  
Clinic

435-658-9998  
[healthcare.utah.edu/locations/park-city-behavioral-clinic](http://healthcare.utah.edu/locations/park-city-behavioral-clinic)  
1820 Sidewinder Dr, Suite 100  
Park City, UT 84060

- Serves any Medicaid eligible Summit County resident, regardless of medical coverage
- Individual, family, and group therapy
- Outpatient recovery clinic
- Intensive outpatient program
- Medication-assisted treatment

Intermountain  
Healthcare Round  
Valley Psychiatry &  
Counseling

435-649-7680  
[intermountainhealthcare.org/locations/park-city-clinic/medical-services/psychiatry-and-counseling](http://intermountainhealthcare.org/locations/park-city-clinic/medical-services/psychiatry-and-counseling)  
750 Round Valley Dr, Suite 202  
Park City, UT 84060

- General outpatient services
- Medication-assisted treatment (buprenorphine/naloxone)
- Assessment and evaluation

Red Willow  
Counseling

801-449-0548  
[redwillowcounseling.com/locations/park-city](http://redwillowcounseling.com/locations/park-city)  
1901 Prospector Ave #30  
Park City, UT 84060

- Assessment and evaluation
- Intensive and general outpatient services
- Family intervention models
- Continuing care and long-term support
- Telehealth options



## **Additional resources for pregnant persons**

**Pregnancy & opioid resources:**

[mihp.utah.gov/opioids](http://mihp.utah.gov/opioids)

**Pregnancy & opioid resources (en Español):**

[mihp.utah.gov/opioides](http://mihp.utah.gov/opioides)

**Maternal mental health referral network:**

[maternalmentalhealth.utah.gov/](http://maternalmentalhealth.utah.gov/)

**Naloxone:**

[naloxone.utah.gov/](http://naloxone.utah.gov/)

**Never use alone:**

800-484-3731

[neverusealone.com/](http://neverusealone.com/)

**Utah support advocates for recovery awareness:**

[myusara.com/](http://myusara.com/)

**211 Utah:**

[211utah.org/](http://211utah.org/)

# Substance use disorder resources

## Tooele County



**Bonneville Family Practice**  
 134 W 1180 N, Suite 4  
 Tooele, UT 84074  
 435-248-0333

bonnevillefp.com

**Clinical Consultants**  
 754 N Main St  
 Tooele, UT 84074  
 435-228-6523

clinicalconsultants.org

**Pathways Real Life Recovery Tooele**  
 58 S Main St  
 Tooele, UT 84074  
 435-255-7688

pathwaystooele.com

**Valley Behavioral Health: Step Down Program**  
 100 S 1000 W  
 Tooele, UT 84074  
 888-949-4864

valleycares.com/substance-abuse

**Warrior Spirit: Nat-Su Health Care**  
 1959 N Aaron Dr, A  
 Tooele, UT 84074  
 Warrior Spirit: 434-714-7376  
 Nat-Su Healthcare:  
 435-850-1823

warriorspirit-recovery.com

Visit [mihp.utah.gov/opioids](http://mihp.utah.gov/opioids) for a statewide list of resources.

### Key

Accepts families	Detoxification	Outpatient services
Accepts Medicaid and/or financial assistance	Inpatient treatment	Prioritizes pregnant persons
Alumni support network	Medication-assisted treatment or medication for opioid use disorder (MAT/MOUD)	Residential treatment
Case management		Sober living

v3 27Dec2022

# Substance use disorder resources

## Tooele County



Name	Contact	Services
Aspen Ridge Counseling Center	801-990-4300 <a href="http://aspenridgecounselingcenter.com/services">aspenridgecounselingcenter.com/services</a> 71 N 50W Tooele, UT 84074	<ul style="list-style-type: none"> <li>• Mental health services only</li> <li>• Full service outpatient services including for children, teens, couples, families, and adults</li> <li>• Includes treatment for depression, anxiety, behavioral problems, etc.</li> <li>• Medicaid provider</li> </ul>
Bonneville Family Practice	435-248-0333 <a href="http://bonnevillefp.com">bonnevillefp.com</a> 134 W 1180 N, Suite 4 Tooele, UT 84074	<ul style="list-style-type: none"> <li>• Mental health and substance use treatment</li> <li>• General family practice services</li> <li>• Individual, family, and couples therapy</li> <li>• Case management</li> <li>• Medication-assisted treatment</li> <li>• Medicaid provider</li> </ul>
Clinical Consultants	435-228-6523 <a href="http://clinicalconsultants.org">clinicalconsultants.org</a> 754 N Main St. Tooele, UT 84074	<ul style="list-style-type: none"> <li>• Medication for opioid use disorder</li> <li>• Dual diagnosis</li> <li>• Assessment and evaluation</li> <li>• Inpatient, intensive, and general outpatient services</li> <li>• Connection to social services</li> <li>• Case management</li> </ul>
Pathways Real Life Recovery Tooele	435-255-7688 Michelle: 801-867-3550 <a href="http://pathwaystooele.com">pathwaystooele.com</a> 58 S Main St. Tooele, UT 84074	<ul style="list-style-type: none"> <li>• Inpatient day treatment and outpatient treatment services</li> <li>• Medically monitored detox and medication management</li> <li>• Alumni support for up to 3 years after completing the program</li> <li>• Dual diagnosis</li> </ul>
Valley Behavioral Health	888-949-4864 <a href="http://valleycares.com">valleycares.com</a> 100 S 1000 W Tooele, UT 84074	<ul style="list-style-type: none"> <li>• General outpatient services</li> <li>• Dual diagnosis</li> <li>• Case management</li> <li>• Psychiatric medication management</li> </ul>

# Substance use disorder resources

## Tooele County



### Name

### Contact

### Services

Warrior Spirit:  
Nat-Su Healthcare

Warrior Spirit: 435-714-7376  
Nat-Su Healthcare: 435-850-1823  
  
warriorspirit-recovery.com/index.html  
  
1959 N Aaron Dr A  
Tooele, UT 84074

- Residential treatment for women and men
- Peer support networks
- Case management
- 12-step based programming
- Only driven by Medicaid
- Sober living
- Various outpatient and inpatient services
- Medication-assisted treatment

## Additional resources for pregnant persons

### Pregnancy & opioid resources:

[mihp.utah.gov/opioids](http://mihp.utah.gov/opioids)

### Pregnancy & opioid resources (en Español):

[mihp.utah.gov/opioides](http://mihp.utah.gov/opioides)

### Maternal mental health referral network:

[maternalmentalhealth.utah.gov/](http://maternalmentalhealth.utah.gov/)

### Naloxone:

[naloxone.utah.gov/](http://naloxone.utah.gov/)

### Never use alone:

800-484-3731  
[neverusealone.com/](http://neverusealone.com/)

### Utah support advocates for recovery awareness:

[myusara.com/](http://myusara.com/)

### 211 Utah:

[211utah.org/](http://211utah.org/)

# Substance use disorder resources

## TriCounty Health



### Northeastern Counseling

28 E 200 S  
Duchesne, UT 84021  
435-738-5512  
285 W 800 S  
Roosevelt, UT 84066  
435-725-6300  
1140 W 500 S  
Vernal, UT 84079  
435-735-6300



[nccutah.org](http://nccutah.org)

### Red Pine Reservation Treatment Center

550 S 6777 E  
Fort Duchesne, UT 84026  
435-722-9906



[utetribe.com/departments/red-pine-treatment-center.html](http://utetribe.com/departments/red-pine-treatment-center.html)

Visit [mihp.utah.gov/opioids](http://mihp.utah.gov/opioids) for a statewide list of resources.

## Key



Accepts families



Detoxification



Outpatient services



Accepts Medicaid and/or financial assistance



Inpatient treatment



Prioritizes pregnant persons



Alumni support network



Medication-assisted treatment or medication for opioid use disorder (MAT/MOUD)



Residential treatment



Case management



Sober living

# Substance use disorder resources

## TriCounty Health



### Name

### Contact

### Services

Northeastern  
Counseling Center:  
Duchesne

435-738-5512  
[nccutah.org](http://nccutah.org)  
28 E 200 S  
Duchesne, UT 84021

- General outpatient services (office-based)
- Medication for opioid use disorder
- Psychiatric medication management
- Accepts Medicaid, sliding scale fee

Northeastern  
Counseling Center:  
Roosevelt

435-725-6300  
[nccutah.org](http://nccutah.org)  
285 W 800 S  
Roosevelt, UT 84066

- General outpatient services (office-based)
- Medication for opioid use disorder
- Psychiatric medication management
- Accepts Medicaid, sliding scale fee

Northeastern  
Counseling Center:  
Vernal

435-789-6300  
[nccutah.org](http://nccutah.org)  
1140 W 500 S #9  
Vernal, UT 84078

- General outpatient services (office-based)
- Medication for opioid use disorder
- Psychiatric medication management
- Accepts Medicaid, sliding scale fee

Red Pine  
Reservation  
Treatment Center

435-722-9906  
[utetribe.com/departments/red-pine-treatment-center.html](http://utetribe.com/departments/red-pine-treatment-center.html)  
550 S 6777 E  
Fort Duchesne, UT 84026

- Priority population: Ute tribe members and indigenous people
- General outpatient services
- Dual diagnosis
- 12-step
- Holistic healing

## **Additional resources for pregnant persons**

**Pregnancy & opioid resources:**

[mihp.utah.gov/opioids](http://mihp.utah.gov/opioids)

**Pregnancy & opioid resources (en Español):**

[mihp.utah.gov/opioides](http://mihp.utah.gov/opioides)

**Maternal mental health referral network:**

[maternalmentalhealth.utah.gov/](http://maternalmentalhealth.utah.gov/)

**Naloxone:**

[naloxone.utah.gov/](http://naloxone.utah.gov/)

**Never use alone:**

800-484-3731

[neverusealone.com/](http://neverusealone.com/)

**Utah support advocates for recovery awareness:**

[myusara.com/](http://myusara.com/)

**211 Utah:**

[211utah.org/](http://211utah.org/)

# Substance use disorder resources

## Utah County

**Intermountain Healthcare - Dayspring**  
395 W Cougar Blvd, Suite 601  
Provo, UT 84604  
801-357-7525



[intermountainhealthcare.org/services/behavioral-health/dayspring](http://intermountainhealthcare.org/services/behavioral-health/dayspring)

**Mountain View Hospital Alcohol & Chemical Treatment**  
1000 E 100 N  
Payson, UT 84651  
801-465-7000




[mountainstar.com/specialties/behavioral-health?location=mountain-view-hospital-payson](http://mountainstar.com/specialties/behavioral-health?location=mountain-view-hospital-payson)

**Pomarri Substance Abuse Recovery Center**  
1472 E 820 N  
Orem, UT 84097  
801-226-1227



[pomarri.com](http://pomarri.com)

**Promise Program - Wasatch Behavioral Health**  
290 E 930 S  
Orem, UT 84058  
385-268-5080



[wasatch.org/substance-abuse-services/substance-use-treatment-programs/promise-program/](http://wasatch.org/substance-abuse-services/substance-use-treatment-programs/promise-program/)

**Provo Canyon Behavioral Hospital**  
1350 E 750 N  
Orem, UT 84097  
801-852-2273



[pcbh.com](http://pcbh.com)












**Steps Recovery Centers**  
901 Orem Blvd.  
Orem, UT 84058  
801-800-8142



[stepsrc.com/facilities/orem-utah-outpatient-drug-and-alcohol-rehab/](http://stepsrc.com/facilities/orem-utah-outpatient-drug-and-alcohol-rehab/)

Visit [mihp.utah.gov/opioids](http://mihp.utah.gov/opioids) for a statewide list of resources.

### Key

-  Accepts families
-  Detoxification
-  Outpatient services
-  Accepts Medicaid and/or financial assistance
-  Inpatient treatment
-  Prioritizes pregnant persons
-  Alumni support network
-  Medication-assisted treatment or medication for opioid use disorder (MAT/MOUD)
-  Residential treatment
-  Case management
-  Sober living



# Substance use disorder resources

## Utah County



### Name

### Contact

### Services

Addiction and  
Psychological  
Services

801-794-2350  
  
addiction-psychological-services.  
business.site  
  
826 N 100 E, Suite 2B  
Spanish Fork, UT

- Assessment and evaluation
- Dual diagnosis
- Opiate specific options: detoxification or medication connections
- Counseling, education, holistic approach

Alliance Clinical  
Services

801-763-7775  
  
acs-utah.com/services  
  
519 W Center St  
Pleasant Grove, UT 84062

- Brief outpatient service
- Intensive outpatient programming
- Group and individual sessions
- Intensive inpatient services

Alpine Recovery  
Lodge

Admissions: 801-874-3056  
Other inquiries: 866-490-2614  
  
alpinerecoverylodge.com  
  
1018 E Oakhill Dr.  
Alpine, UT 84004

- Holistic residential treatment services
- Dual diagnosis
- Detoxification
- Topics include: meditation, mindfulness, emotional processing, trauma, and PTSD
- Includes on-site primary medical care
- Accepts most private insurance, private pay
- Affordable and competitive prices; insurance navigators on-site

A.V.Y- Avda  
Counseling

801-960-3040  
  
avycs.com  
  
165 N 1330 W, Suite A-1  
Orem, UT 84057

- Assessment and evaluation
- Dual diagnosis
- General outpatient services (office-based)

Comprehensive  
Treatment Centers -  
Orem

Intake: 801-899-0191  
Orem: 801-426-6565  
  
ctcprograms.com/location/orem-  
comprehensive-treatment-center  
  
714 S State St  
Orem, UT 84058

- Medication assisted treatment
- Counseling
- Outpatient detox
- Accepts Medicaid

# Substance use disorder resources

## Utah County



Name	Contact	Services
House of Hope	801-373-6562 <a href="http://houseofhopeut.org/programs/house-of-hope-provo">houseofhopeut.org/programs/house-of-hope-provo</a> 1726 S Buckley Lane Provo, UT 84606	<ul style="list-style-type: none"><li>• Focuses on pregnant women and their families</li><li>• Assessments</li><li>• Residential treatment</li><li>• Allows mother to bring in 3 children at time of residential treatment</li></ul>
Intermountain Healthcare "Dayspring"	801-357-7525 <a href="http://intermountainhealthcare.org/services/behavioral-health/dayspring/">intermountainhealthcare.org/services/behavioral-health/dayspring/</a> 395 W Cougar Blvd, Suite 601 Provo, UT 84604	<ul style="list-style-type: none"><li>• Assessment and evaluation</li><li>• Intensive and general outpatient services</li><li>• Dual diagnosis</li><li>• Outreach and aftercare for alumni</li></ul>
Institute for Cognitive Therapy	801-802-8608 <a href="http://ictutah.org/about.html">ictutah.org/about.html</a> 870 S Orem Blvd, Suite 1 Orem, UT 84058	<ul style="list-style-type: none"><li>• Assessment and evaluation</li><li>• General outpatient services (office-based)</li><li>• Relapse prevention</li><li>• Accepts most private insurances, sliding scale fee</li></ul>
I Am Recovery	801-407-9998 <a href="http://i-am-recovery.com/services">i-am-recovery.com/services</a> 3784 West Valley View Dr. Suite A Cedar Hills, UT 84062	<ul style="list-style-type: none"><li>• Assessment and evaluation</li><li>• Dual diagnosis</li><li>• General outpatient services</li><li>• PRIME for Life</li><li>• Connection to transitional living opportunities</li><li>• Peer coaching</li></ul>
Life Balance Recovery	801-367-0394 ext 700 <a href="http://lifebalancerecovery.com/services/">lifebalancerecovery.com/services/</a> 1291 Expressway Lane Spanish Fork, UT 84660	<ul style="list-style-type: none"><li>• Day treatment, intensive, and general outpatient services</li><li>• Sober living beds</li><li>• Drug testing and assessments Peer support with alumni network</li><li>• Accepts most insurances, Medicaid, sliding scale fee</li></ul>

# Substance use disorder resources

## Utah County



Name	Contact	Services
Maple Mountain Recovery	<p>801-499-9316</p> <p>maplemountainrecovery.com</p> <p>727 E 1100 S Mapleton, UT 84664</p>	<ul style="list-style-type: none"> <li>• General outpatient services</li> <li>• Residential treatment services</li> <li>• Dual diagnosis</li> </ul>
Mountain View Hospital: The Pavilion Alcohol & Chemical Treatment	<p>801-465-7000</p> <p>mountainstar.com/specialties/behavioral-health?location=mountain-view-hospital-payson</p> <p>1000 E 100 N Payson, UT 84651</p>	<ul style="list-style-type: none"> <li>• Detoxification</li> <li>• Inpatient treatment services</li> <li>• Intensive and general outpatient services</li> <li>• Dual diagnosis</li> <li>• Short-term</li> <li>• Accepts Medicaid, Medicare, private insurances, self-pay</li> </ul>
Mount Grove Counseling	<p>801-404-0064</p> <p>mtgrovecounseling.com/addictions-counseling</p> <p>66 E State Rd. Pleasant Grove, UT 84062</p>	<ul style="list-style-type: none"> <li>• General outpatient services (office-based)</li> <li>• Relapse planning and prevention</li> <li>• Trauma counseling</li> <li>• Includes court-ordered treatment</li> </ul>
Nexstep Medical Detox	<p>801-420-0089</p> <p>nexstepdetox.com</p> <p>1080 E 800 N Orem, UT 84097</p>	<ul style="list-style-type: none"> <li>• Detoxification</li> <li>• Care coordination with follow-up facility</li> <li>• Accepts major insurance plans</li> </ul>
Pomarri Substance Abuse Recovery Center	<p>801-226-1227</p> <p>pomarri.com</p> <p>1472 E 820 N Orem, UT 84097</p>	<ul style="list-style-type: none"> <li>• Detoxification</li> <li>• Outpatient treatment services</li> <li>• Perinatal SUD treatment:               <ul style="list-style-type: none"> <li>- Any trimester</li> <li>- Pain management postpartum</li> <li>- Uses Subutex taper</li> </ul> </li> <li>• Accepts self-pay, Select Health, Medicaid, Molina Healthcare, and offers loan options</li> </ul>

# Substance use disorder resources

## Utah County



Name	Contact	Services
Provo Canyon Behavioral Hospital	<p>801-852-2273</p> <p>pcbh.com</p> <p>1350 E 750 N Orem, UT 84097</p>	<ul style="list-style-type: none"> <li>• Inpatient treatment services</li> <li>• Intensive and general outpatient services</li> <li>• Dual diagnosis</li> <li>• Case management</li> <li>• Financial counselors available</li> </ul>
Silver Creek Psych and Family Practice	<p>801-919-5079</p> <p>silvercreekpsy.com/ buprenorphine-and- subutex-suboxone-clinic/</p> <p>1480 E 820 N Orem, UT 84097</p>	<ul style="list-style-type: none"> <li>• Tapering program for those struggling with dependence or poly-substance abuse</li> <li>• Buprenorphine/naloxone clinic to help alleviate withdrawal symptoms</li> </ul>
Steps Recovery Centers - Orem	<p>801-800-8142</p> <p>stepsrc.com/facilities/oreum-utah- outpatient-drug-and-alcohol-reha b/</p> <p>901 Orem Blvd. Orem, UT 84058</p>	<ul style="list-style-type: none"> <li>• Intensive and general outpatient services</li> <li>• Residential services</li> <li>• Dual diagnosis</li> <li>• Family support</li> <li>• Aftercare with alumni support network</li> <li>• Accepts most private insurance and Medicaid</li> </ul>
True North Recovery and Wellness Center	<p>801-691-0672</p> <p>truenorthutah.com</p> <p>234 N Orem Blvd. Orem, UT 84057</p>	<ul style="list-style-type: none"> <li>• Medication for opioid use disorder</li> <li>• PRIME for Life</li> <li>• Intensive and general outpatient services</li> <li>• On-site drug testing</li> <li>• Accepts most insurance, Medicaid; call to determine eligibility</li> </ul>
Utah Addiction Centers	<p>801-766-2233</p> <p>utahaddictioncenters.com/ utah-drug-rehab/</p> <p>2590 Prairie View Dr. Eagle Mountain, UT 84005</p>	<ul style="list-style-type: none"> <li>• Residential treatment services</li> <li>• Customized treatment of drug abuse plan</li> <li>• Detoxification</li> <li>• Dual diagnosis</li> <li>• Extended care with loved ones</li> </ul>

# Substance use disorder resources

## Utah County



Name	Contact	Services
Utah Addiction Centers: Christian Recovery Program	385-207-2029 <a href="http://zionrecoverycenter.com/christian-recovery-program/">zionrecoverycenter.com/ christian-recovery-program/</a>  4682 Foxwood Dr. Eagle Mountain, UT 84005	<ul style="list-style-type: none"><li>• Inpatient treatment services</li><li>• Faith based program—requires meeting with spiritual leader for referral</li><li>• 12-step program</li><li>• Accepts most private insurance</li></ul>
Wasatch Behavioral Health: Promise Program	385-268-5080 <a href="http://wasatch.org/substance-abuse-services/substance-use-treatment-programs/">wasatch.org/ substance-abuse-services/ substance-use-treatment- programs/</a>  290 E 930 S Orem, UT 84058	<ul style="list-style-type: none"><li>• General and intensive outpatient services</li><li>• Dual diagnosis</li><li>• Residential treatment for women with children in recovery</li><li>• Priority population: pregnant persons, IV drug users, and Medicaid recipients</li></ul>

## Additional resources for pregnant persons

### **Pregnancy & opioid resources:**

[mihp.utah.gov/opioids](http://mihp.utah.gov/opioids)

### **Pregnancy & opioid resources (en Español):**

[mihp.utah.gov/opioides](http://mihp.utah.gov/opioides)

### **Maternal mental health referral network:**

[maternalmentalhealth.utah.gov/](http://maternalmentalhealth.utah.gov/)

### **Naloxone:**

[naloxone.utah.gov/](http://naloxone.utah.gov/)

### **Never use alone:**

800-484-3731

[neverusealone.com/](http://neverusealone.com/)

### **Utah support advocates for recovery awareness:**

[myusara.com/](http://myusara.com/)

### **211 Utah:**

[211utah.org/](http://211utah.org/)

# Substance use disorder resources

## Wasatch County

### Wasatch Behavioral Health – Wasatch County Family Clinic

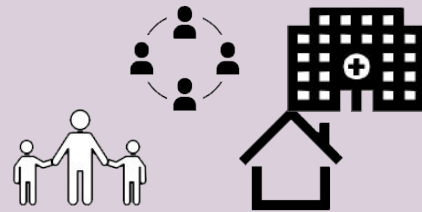
55 S. 500 E.  
Heber, UT 84032  
435-654-3003



[wasatch.org/adult-services/wasatch-county-family-clinic/](https://wasatch.org/adult-services/wasatch-county-family-clinic/)

### Wasatch Crest Treatment

425 W. Moulton Lane  
Heber, UT 84032  
(435) 657-9755



[wasatchcresttreatment.com](https://wasatchcresttreatment.com)

Visit [mihp.utah.gov/opioids](https://mihp.utah.gov/opioids) for a statewide list of resources.

## Key



Accepts families



Detoxification



Outpatient services



Accepts Medicaid and/or  
financial assistance



Inpatient treatment



Prioritizes pregnant  
persons



Alumni support  
network



Medication-assisted  
treatment or  
medication for  
opioid use disorder  
(MAT/MOUD)



Residential treatment



Case management



Sober living

# Substance use disorder resources

## Wasatch County



Name	Contact	Services
Expansive Horizons Counseling	801-360-6955 expansivehorizons.net 450 West 910 South Heber City, UT 84032	<ul style="list-style-type: none"><li>• Psychological evaluation</li><li>• Individual counselling</li><li>• Substance use assessment and treatment</li></ul>
Wasatch Behavioral Health - Wasatch County Family Clinic	435-654-3003 wasatch.org/adult-services/wasatch-county-family-clinic 55 S. 500 E. Heber, UT 84032	<ul style="list-style-type: none"><li>• General and intensive outpatient services</li><li>• Assessment and evaluation</li><li>• Medication assisted treatment</li><li>• Dual diagnosis</li><li>• Accepts Medicaid</li></ul>
Wasatch Crest Treatment	800-385-3507 wasatchcresttreatment.com 425 W. Moulton Lane Heber, UT 84032	<ul style="list-style-type: none"><li>• Residential treatment center</li><li>• Evening and virtual intensive outpatient treatment</li><li>• Inpatient addiction treatment</li><li>• Dual diagnosis</li><li>• Accepts private pay and most major insurance carriers</li></ul>

## Additional resources for pregnant persons

### **Pregnancy & opioid resources:**

[mihp.utah.gov/opioids](http://mihp.utah.gov/opioids)

### **Pregnancy & opioid resources (en Español):**

[mihp.utah.gov/opioides](http://mihp.utah.gov/opioides)

### **Maternal mental health referral network:**

[maternalmentalhealth.utah.gov/](http://maternalmentalhealth.utah.gov/)

### **Naloxone:**

[naloxone.utah.gov/](http://naloxone.utah.gov/)

### **Never use alone:**

800-484-3731

[neverusealone.com/](http://neverusealone.com/)

### **Utah support advocates for recovery awareness:**

[myusara.com/](http://myusara.com/)

### **211 Utah:**

[211utah.org/](http://211utah.org/)

# Substance use disorder resources

## Weber-Morgan Health Department



**Action Recovery Group**  
**- Drug and Alcohol Treatment**  
 1708 E 550 S, Suite 23  
 Ogden, UT 84403  
 801-475-HOPE (4673)

actiontreatment.com

**BAART Programs**  
 2557 Lincoln Ave  
 Ogden, UT 84401  
 801-622-5272

baartprograms.com/baart-ogden

**Clinical Consultants**  
 2661 Washington Blvd, Suite 102  
 Ogden, UT 84401  
 801-621-8670

clinicalconsultants.org

**Ogden Regional Medical**  
 5745 S 375 E  
 Ogden, UT 84405  
 801-479-2250

ogdenact.com

**Weber Human Services**  
 237 26<sup>TH</sup> St.  
 Ogden, UT 84401  
 801-625-3700

weberhs.net/substance-use-disorder-treatment-services

Visit [mihp.utah.gov/opioids](http://mihp.utah.gov/opioids) for a statewide list of resources.

### Key

Accepts families	Detoxification	Outpatient services
Accepts Medicaid and/or financial assistance	Inpatient treatment	Prioritizes pregnant persons
Alumni support network	Medication-assisted treatment or medication for opioid use disorder (MAT/MOUD)	Residential treatment
Case management		Sober living

v3 27Dec2022



# Substance use disorder resources

## Weber-Morgan Health Department



### Name

### Contact

### Services

Action Recovery Group—Drug and Alcohol Treatment

801-475-HOPE (4673)  
actiontreatment.com  
1708 E 5550 S, Suite 23  
Ogden, UT 84403

- General outpatient services
- Dual diagnosis
- Detoxification coordination
- 12-step recovery options
- Up to 2 years of aftercare

BAART Programs, Ogden

801-622-5272  
baartprograms.com/baart-ogden  
2557 Lincoln Ave.  
Ogden, UT 84401

- Medication for opioid use disorder—methadone and buprenorphine/naloxone
- Outpatient counseling
- Accepts Medicaid and Medicare Part B

Clinical Consultants

801-621-8670  
clinicalconsultants.org  
2661 Washington Blvd, Suite 102  
Ogden, UT 84401

- Medication for opioid use disorder
- Dual diagnosis
- Assessment and evaluation
- Inpatient
- Intensive and general outpatient
- Connection to social services
- Case management

GMS Counseling, LLC

801-621-1901  
gmscounselingllc.com  
3505 Grant Ave.  
Ogden, UT 84401

- Intensive and general outpatient services
- Dual diagnosis
- Relapse prevention
- Educational and trauma groups

Infinite Arches

801-928-7770  
infin8arches.com  
136 E 25th St.  
Ogden, UT 84401

- Residential treatment services
- Dual diagnosis
- Accepts most insurances

# Substance use disorder resources

## Weber-Morgan Health Department



### Name

### Contact

### Services

Ogden Regional Medical Center: Alcohol Chemical Treatment Program	801-479-2250 ogdenact.com 5475 S 375 E Ogden, UT 84405	<ul style="list-style-type: none"><li>• Detoxification</li><li>• Inpatient and day treatment services</li><li>• Intensive and general outpatient</li><li>• Residential treatment services</li><li>• Dual diagnosis</li><li>• Telehealth options</li><li>• Relapse prevention</li><li>• 12-step options</li></ul>
Ogden Rescue Mission: New Life Program	801-621-4360 ogdenrescuemission.org/new-life-recovery-program 2775 Wall Ave. Ogden, UT 84401	<ul style="list-style-type: none"><li>• Priority population: Persons with substance use disorder or mental health problem and people experiencing homelessness</li><li>• 3-phase residential program</li><li>• Case management with social service providers</li><li>• Faith-based recovery</li></ul>
Weber Human Services	801-625-3700 weberhs.net/substance-use-disorder-treatment-services 237 26th St. Ogden, UT 84401	<ul style="list-style-type: none"><li>• Residential treatment services</li><li>• Day treatment services</li><li>• Dual diagnosis</li><li>• Relapse prevention</li><li>• Psychiatric medication management</li><li>• 12-step options</li></ul>
Women's Retreat House	801-791-9084 womensretreathouse.com 340 W 2550 N Pleasant View, UT 84414	<ul style="list-style-type: none"><li>• Residential treatment services</li><li>• 12-step options</li><li>• Faith-based recovery services cost \$120 per week</li></ul>

## **Additional resources for pregnant persons**

**Pregnancy & opioid resources:**

[mihp.utah.gov/opioids](http://mihp.utah.gov/opioids)

**Pregnancy & opioid resources (en Español):**

[mihp.utah.gov/opioides](http://mihp.utah.gov/opioides)

**Maternal mental health referral network:**

[maternalmentalhealth.utah.gov/](http://maternalmentalhealth.utah.gov/)

**Naloxone:**

[naloxone.utah.gov/](http://naloxone.utah.gov/)

**Never use alone:**

800-484-3731

[neverusealone.com/](http://neverusealone.com/)

**Utah support advocates for recovery awareness:**

[myusara.com/](http://myusara.com/)

**211 Utah:**

[211utah.org/](http://211utah.org/)